

# OVERVIEW OF THE GARRETT LEE SMITH (GLS) NATIONAL OUTCOMES EVALUATION AND IRB PROCESSES FOR CAMPUS GRANTEEES

**November 15, 2018**

Taylor Moore, PhD

Sophia Zanakos, PhD

Connie Maples, MS

# Webinar Video and Handouts

Today's webinar is being recorded

The slides were e-mailed to you prior to the webinar

If you did not receive the message, check your spam e-mail folder

The video will be made available on the Suicide Prevention Data Center (SPDC)

<https://www.suicideprevention-datacenter.com>

and the Suicide Prevention Resource Center website

# Need Assistance?

For technical support:

Contact us via the **Chat Pod**

E-mail [Terri.Karney-Brown@icf.com](mailto:Terri.Karney-Brown@icf.com)



**Taylor Moore, PhD**

Grantee Support Team Leader

Taylor.Moore@icf.com

# Today's Agenda

GLS National Outcomes Evaluation

Prior Evaluation Findings

Evaluation Design

Data Collection for the National Outcomes Evaluation

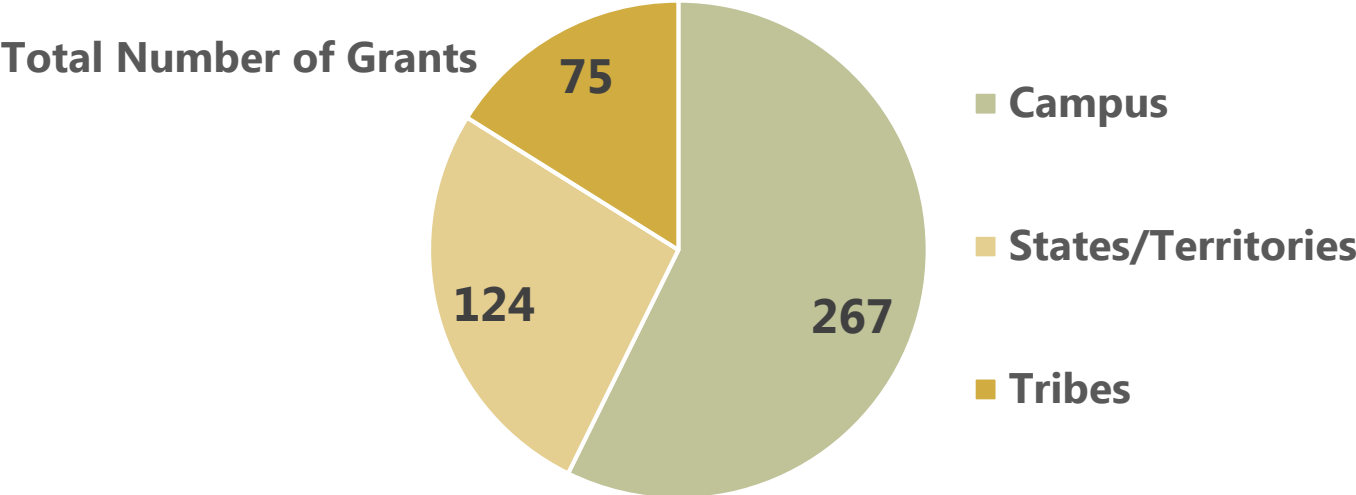
Institutional Review Board (IRB) Processes

Suicide Prevention Data Center (SPDC)

Evaluation Training and Technical Assistance

# ICF and the National Outcomes Evaluation

ICF has conducted the National Suicide Prevention Evaluation since 2005



ICF houses the largest repository of youth suicide prevention data in the United States

# Why is the evaluation important ?

## The National Outcomes Evaluation can contribute to:

Program improvement

Local evaluation

Sustainability

Evidence base for suicide prevention programming

Impact assessments of GLS program activities

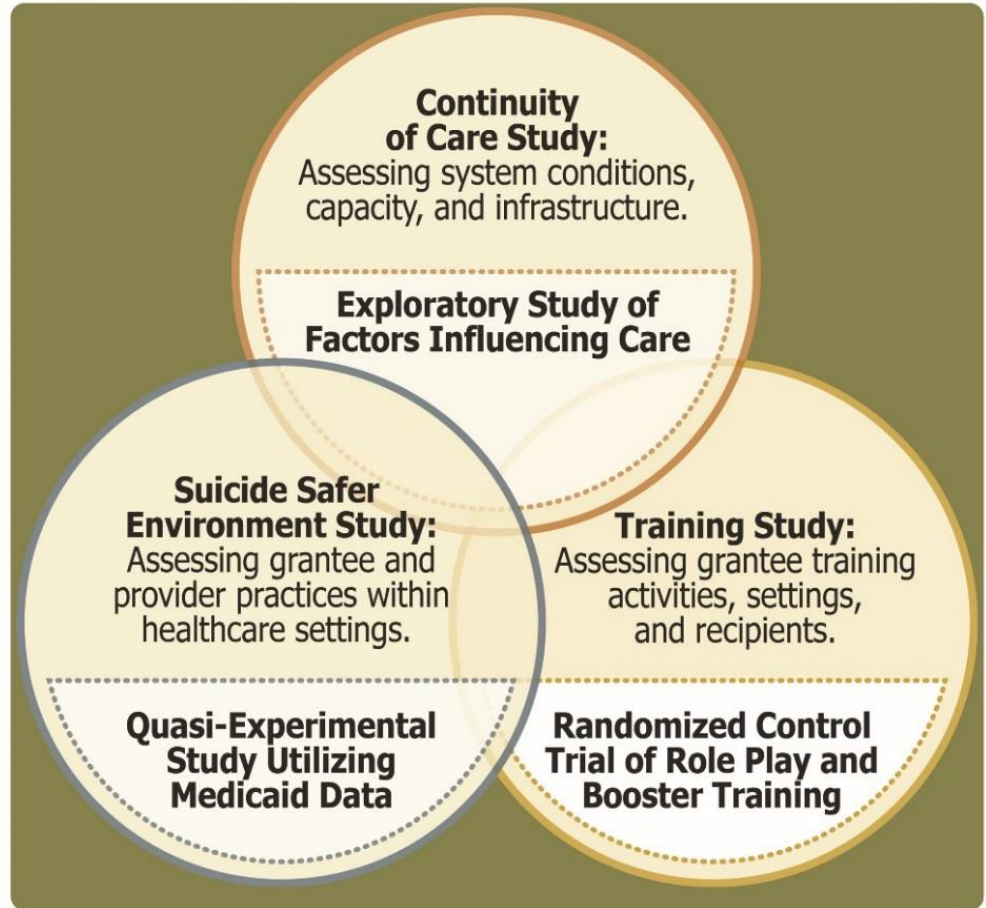
## SAMHSA Evaluation Goal

“The goal of the GLS Youth Suicide Prevention programs and the NSPL is the reduction of suicide and suicide attempts across America. In order to accomplish this critical, lifesaving work, it is essential that the effectiveness of these programs be evaluated on an ongoing basis, with implementation of suicide prevention programs continually informed by evaluation results”

# NOE Design Overview

## CORE & ENHANCED STUDY ANALYSIS (Including Implementation and Proximal Outcomes)

GLS National Outcomes Evaluation



### Cross-Program Analysis and Impact:

Addresses evaluation questions that cut across the three studies (core and enhanced) and utilizes secondary data sources as well as data collected from currently and previously funded grantees to assess the impact of suicide prevention activities on ultimate outcomes such as mental health service utilization, suicide attempts, and suicide deaths and explores, where feasible, the cost of implementation relative to the impact.



# Evaluation Questions

EVALUATION QUESTIONS	STUDY
EQ 1: Are certain training approaches effective in building capacity to increase youth identification (when compared with more basic trainings)?	Training Study
EQ 2: Are GLS prevention activities effective in developing continuity of care from identification, to referral of youth at risk for suicide, to the provision of needed services?	Continuity of Care Study
EQ 3: To what extent are grantees and associated providers implementing suicide safer environment/Zero Suicide frameworks? Does this framework implementation lead to decreases in suicide attempts and completions?	Suicide Safer Environment Study



**Sophia Zanakos, PhD**  
Project Director

[Sophia.Zanakos@icf.com](mailto:Sophia.Zanakos@icf.com)

# Prior Evaluation Findings

As of July 2018



States and tribes implemented 32,849 training activities. Campuses implemented 7,010 training activities.



States and tribes trained 1,264,867 people. Campuses have trained 217,630 people.

# STUDENT BEHAVIORAL HEALTH FORM (SBHF): Cohort 9

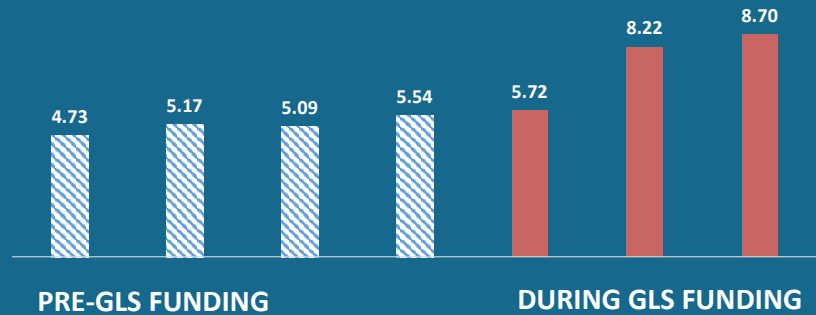
57 campuses from cohorts 9, 10 and 11 participated in the SBHF in Spring/Summer 2018

Grantees submitted data from the GLS funded years and the four years prior to the grant

What are the top screening instruments used by GLS campuses of different sizes?

	SMALL CAMPUSES	MEDIUM CAMPUSES	LARGE CAMPUSES
ASK SUICIDE SCREENING QUESTIONS (ASQ)	●		
COUNSELING CENTER ASSESSMENT OF PSYCHOLOGICAL SYMPTOMS (CCAPS)	●	●	●
PATIENT HEALTH QUESTIONNAIRE	●	●	●
OTHER	●	●	●

What percent of your student body use behavioral health services on your campus?



\*Cohort level information

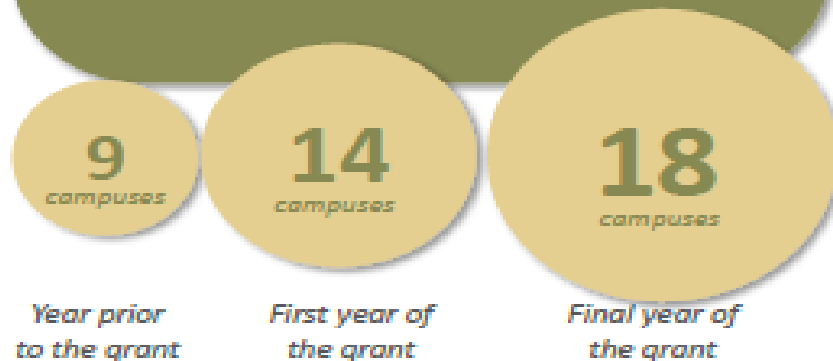
The Garrett Lee Smith Suicide Prevention National Outcomes Evaluation is supported through contract no. HHSS2832012000071/HHSS28342002T awarded to ICF International by the Center for Mental Health Services (CMHS), Substance Abuse and Mental Health Services Administration (SAMHSA), US Department of Health and Human Services (HHS). Questions about the information presented can be directed to your ICF Technical Assistance Liaison. For more information about the GLS National Outcomes Evaluation contact Christine Walrath, Ph.D. - Principal Investigator.

# Services Received by Students Identified as at Risk on Campuses

SERVICE	PERCENT OF STUDENTS
Behavioral health counseling	84.0%
Medication management	15.2%
Crisis/emergency service	25.4%
Initiation of an on-campus emergency protocol	20.4%

Cohort 9 campus grantees are **successful** in implementing strategies to track suicide attempts over the course of the grant

The number of campuses able to report on suicide attempts **DOUBLED** between the year prior to receiving the grant (2014-15) to the final year of the grant (2017-18).



## NUMBER OF CAMPUSES USING A CAMPUS-WIDE INCIDENT REPORTING SYSTEM PROTOCOL

*Prior to the grant*

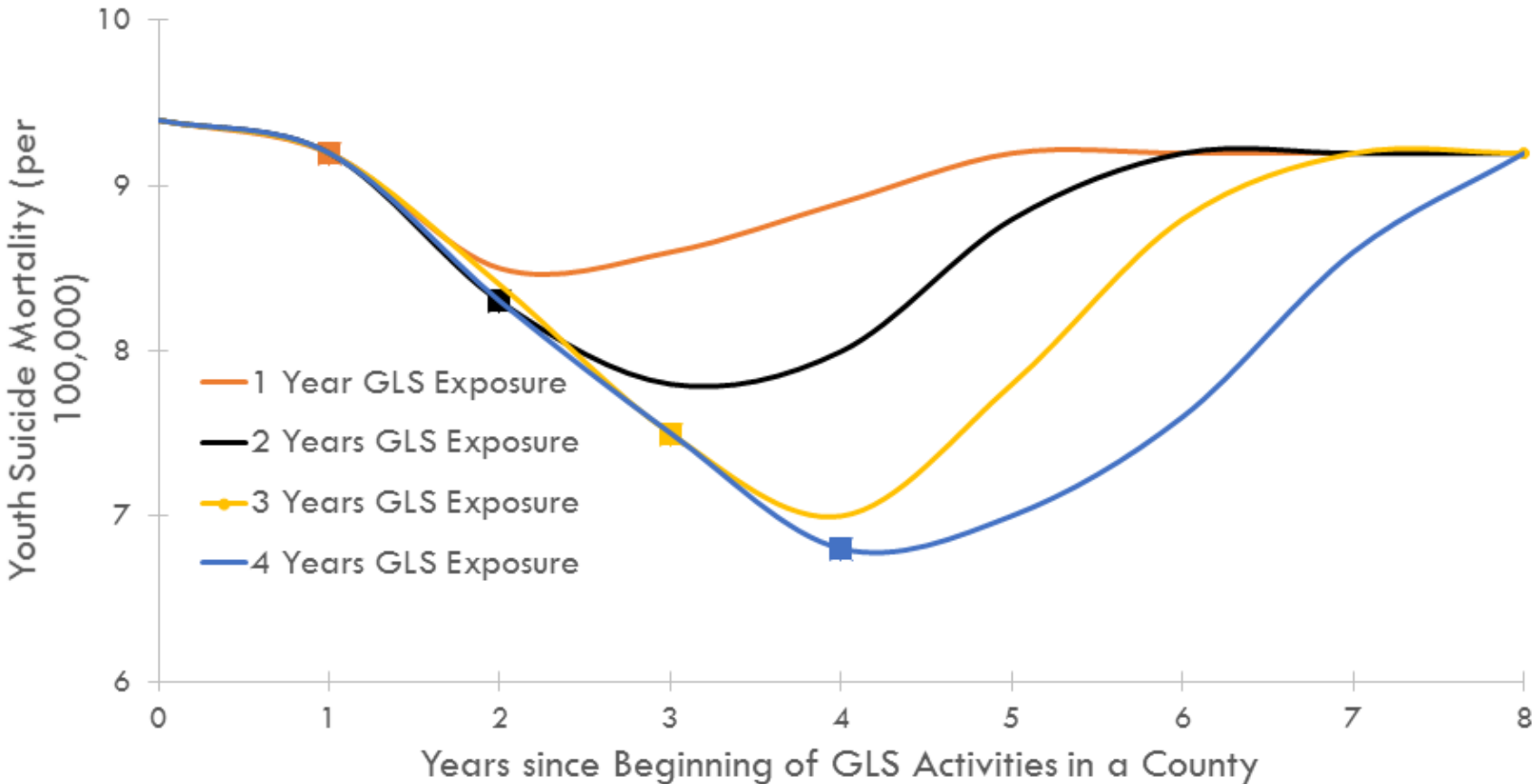


*End of the grant*



2017-18 SBHF

# Youth Suicide Outcomes Following GLS implementation



**GARRETT LEE SMITH YOUTH SUICIDE  
PREVENTION AND EARLY INTERVENTION  
NATIONAL OUTCOMES EVALUATION**

**Fiscal Year 2017  
Report to Congress**  
December 2017



The Garrett Lee Smith Suicide Prevention National Outcomes Evaluation is supported through contract No. HHSS2832012000071/HHSS283420021 (Reference No. 283-12-0702) awarded to ICF International by the Center for Mental Health Services (CMHS), Substance Abuse and Mental Health Services Administration (SAMHSA), US Department of Health and Human Services (HHS).

**Check out the  
2017 Evaluation  
Report to  
Congress  
posted on the  
SPDC**





**QUESTIONS?**

# DATA COLLECTION FOR THE NATIONAL OUTCOMES EVALUATION

INSTRUMENT OVERVIEW

# Prevention Strategies Inventory

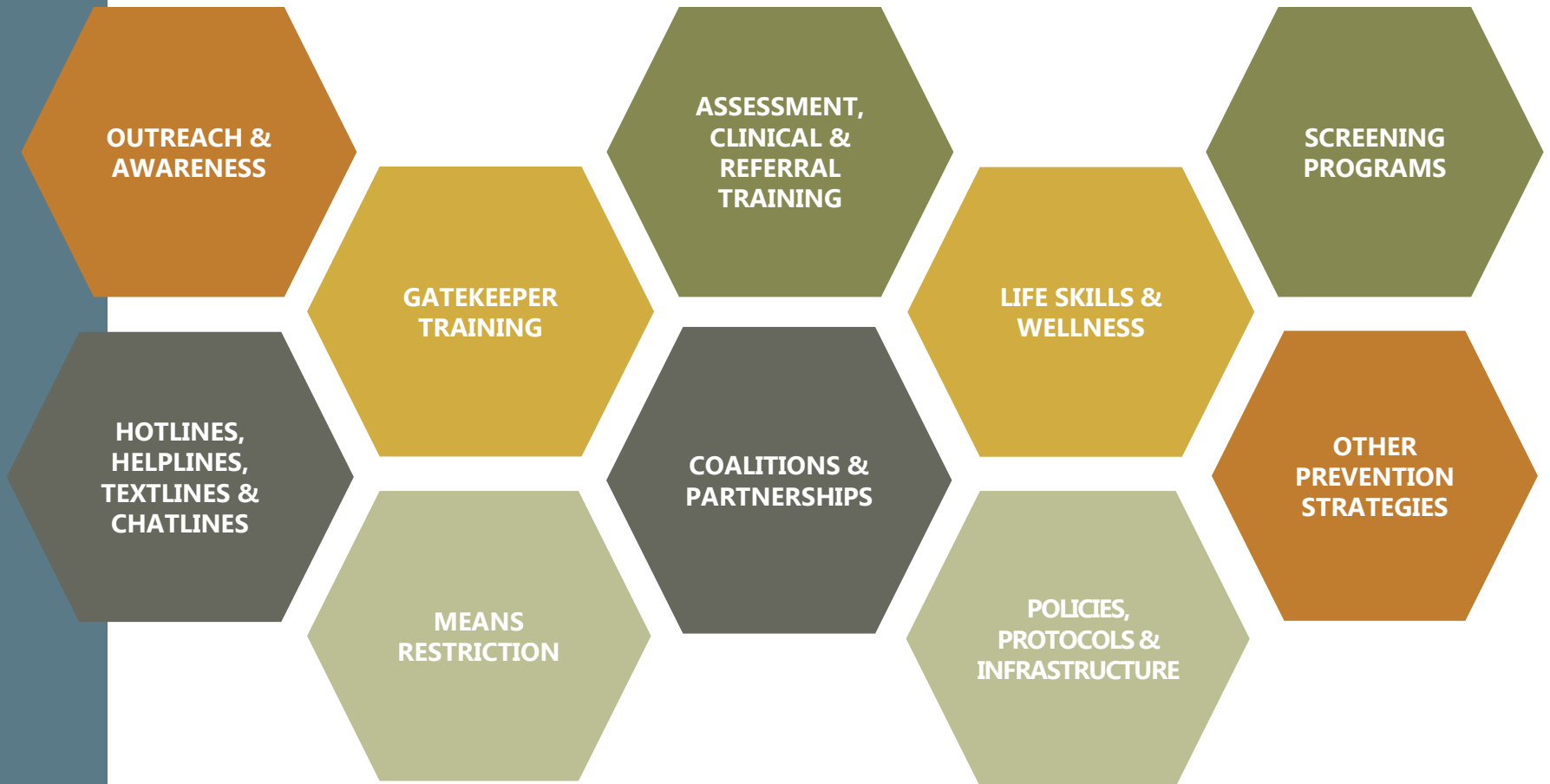
## Purpose

**Strategies:** Inventory of all prevention strategies and products that are a part of grantee GLS funded programs

**Expenditures:** Total amount of GLS funds (including matching and in-kind) expended to date, and the percent of funds expended to date by strategy

PSI

# Prevention Strategies



# PSI

<b>Who is responsible for data collection for the PSI?</b>	Grantee Program Staff
<b>How is the PSI administered/entered?</b>	Web-based form entered into SPDC
<b>When will the PSI be administered?</b>	Ongoing throughout the grant period, but the PSI must be reviewed and submitted prior to quarterly deadlines
<b>When will the PSI begin?</b>	January 2019

# Training Activity Summary Page

## Purpose

Gathers aggregate training information for training activities implemented

Collects trainee role, setting, intended outcome and booster training information

<b>Who is responsible for TASP data collection/entry?</b>	Grantee Program Staff
<b>How is the TASP entered?</b>	Information submitted via the SPDC using web-based form or excel spreadsheet upload
<b>When is the TASP administered?</b>	Ongoing throughout the grant period, within 2 weeks of in person training activity and quarterly for online trainings
<b>When will the TASP begin?</b>	As soon as training activities begin

# Student Behavioral Health Form

Completed a total of **three times** by all campus grantees over the course of their grant period

Late **spring/early summer** (June)

Includes questions regarding the most recent academic year and the *four prior academic years*.



# Purpose and Overview

The SBHF gathers information about:

- Behavioral health services on campus
- Screenings and assessments of suicide risk
- Services for students at risk of suicide
- Suicide attempts and completions

The instrument includes a mix of **quantitative** questions (e.g., how many suicide attempts occurred on campus?) and **policy** related questions (e.g., after a suicide attempt, what happens?).

<p><b>Who is responsible for data collection for the SBHF?</b></p>	<p>Grantee Program Staff</p>
<p><b>How is the SBHF entered?</b></p>	<p>Web-based form entered into SPDC</p>
<p><b>When is the SBHF administered?</b></p>	<p>Annually, during the late spring/early summer          Respondents will have several weeks to enter the data</p>

# **INSTITUTIONAL REVIEW BOARD (IRB) PROCESSES**

# Levels of IRB Review

## Full Board

- No more than minimal risk
- Not covered under the other review categories
- Example: interventions involving physical or emotional discomfort or sensitive data

## Expedited

- Not greater than minimal risk. (See list of expedited categories per the Office for Human Research Protections, HHS.)
- Example: collections of biospecimens by noninvasive means, research with existing documents/records collected for non-research purposes in which subjects are identifiable

## Exempt

- Less than minimal risk
- Fits 1 of the 7 exempt categories
- Example: Research with de-identified records, anonymous surveys

# Role of the IRB

Protect the rights and welfare of individual research subjects and ensure:

Risk to subjects are minimized and reasonable in relation to anticipated benefits

Selection of subjects is fair

Informed consent is appropriately documented

When appropriate, the research plan makes provisions for monitoring data collection

Privacy and confidentiality of research subjects is appropriately protected

# Roles and Responsibilities

ICF's IRB reviews the National Outcomes Evaluation protocol and provides approval for ICF to conduct the State/Tribal and Campus evaluations

Grantee IRB (or appropriate entity) reviews relevant National Outcomes Evaluation data collection activities before grantee can participate/submit data and either

Provides IRB approval

Determines monitoring is not required by the grantee IRB (i.e., determines data collection is exempt from IRB approval)

# IRB Processes

## IRB Preparation

Determine what approval(s) are needed to participate in the NOE:

- Campus IRB

***ICF will provide materials and technical assistance to help with your local application***

## IRB Submission

Submit local IRB application, which may require:

- Objective of the study and instruments used
- Respondents (how many, who)
- Risk to human subjects
- Data collection methods

## Update ICF

Once the review is complete, grantees **must submit documentation** of the determination (e.g., IRB approval or exempt from IRB approval) to **Connie.Maples@icf.com**

## Keep IRB Status Current

- Update your local IRB about data collection revisions (via amendments)
- Know your local IRB requirements for renewal

***Submit renewals to Connie.Maples@icf.com***

# Next Step

Prepare your IRB package and submit for approval ASAP!

Grantees are expected to have notification of approval or exemption by mid-January, 2019.



# POLL QUESTION

What type of local IRB process will your campus likely use?





**QUESTIONS?**

# SUICIDE PREVENTION DATA CENTER (SPDC)

[Spdc-help@icf.com](mailto:Spdc-help@icf.com)

SPDC Help Desk  
956-722-0474



**Connie Maples**

Connie.Maples@icf.com



**Nora Kuiper**

Nora.Kuiper@icf.com

# What can grantees do on the SPDC?



# How do I Access the SPDC?

Grantee SPDC users provided with username and password



# SPDC Users

No public access - Access requires a user name and password

Who are appropriate users of the SPDC in your community?

Are there any concerns about who to include/exclude?

SPDC has various levels of security for users

# SPDC Users





# Security and User Levels

Determined by the primary roles they serve

	DATA DOWN LOAD, VIEW, EDIT, DELETE	RESPONSE MONITORING TABLES & DATA ISSUE REPORTS	VIEW AGGREGATE-LEVEL REPORTS	VIEW SITE-LEVEL REPORTS	DATA ENTRY VIA UPLOAD	DATA ENTRY VIA ONLINE SURVEY	RECEIVES EMAIL UPDATES
<b>Grantee Site Administrator</b>	<b>X</b>	<b>X</b>	<b>X</b>	<b>X</b>	<b>X</b>	<b>X</b>	<b>Optional</b>
<b>Site User</b>			<b>X</b>	<b>X</b>	<b>X</b>	<b>X</b>	<b>Optional</b>
<b>Contact User</b>						<b>X</b>	<b>Optional</b>
<b>Contact-No SPDC Access</b>							<b>X</b>

- No information reported with <10 cases

# Assigning User Levels

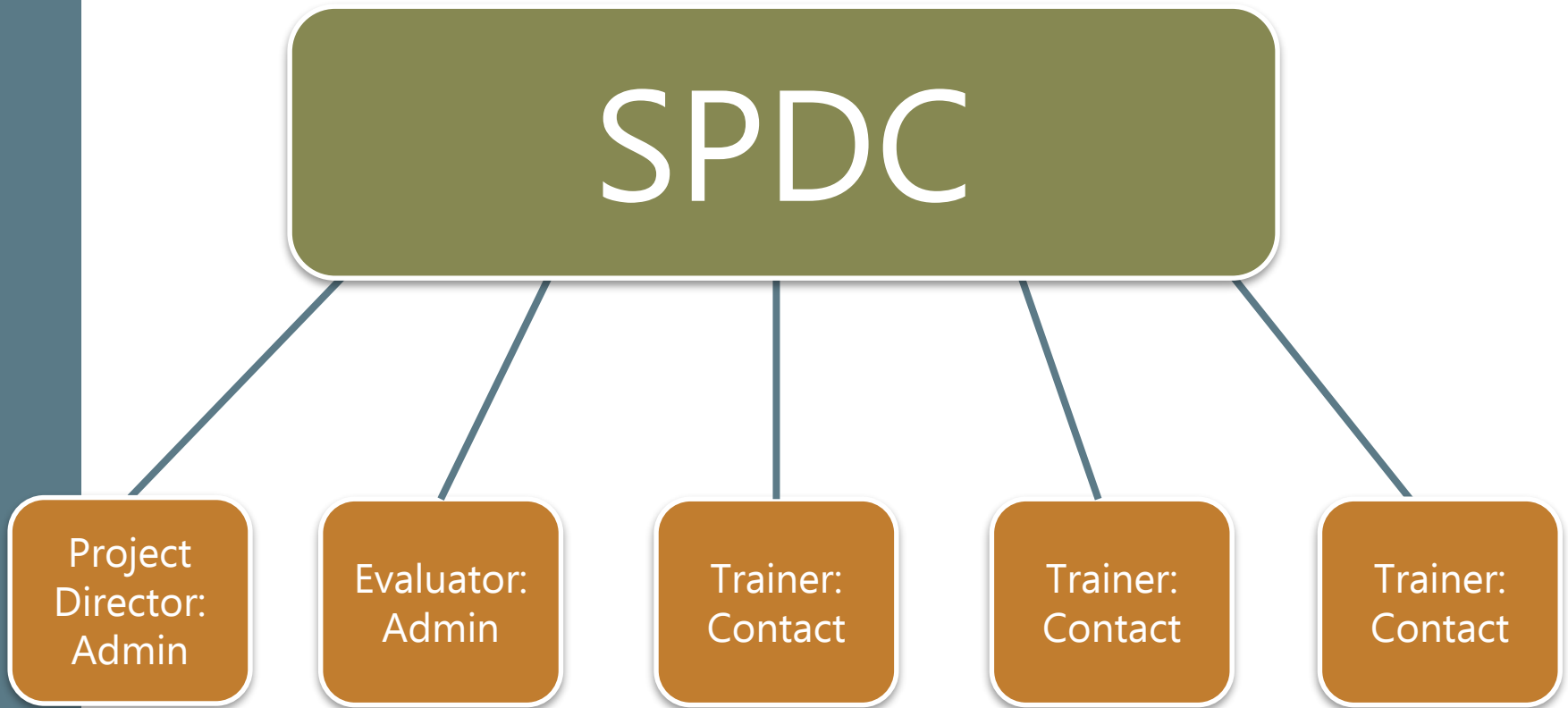
ICF will create one **site administrator** account for each grantee

Site administrators register new users

- Assign user security level
- Provide username and password
- Edit or delete users

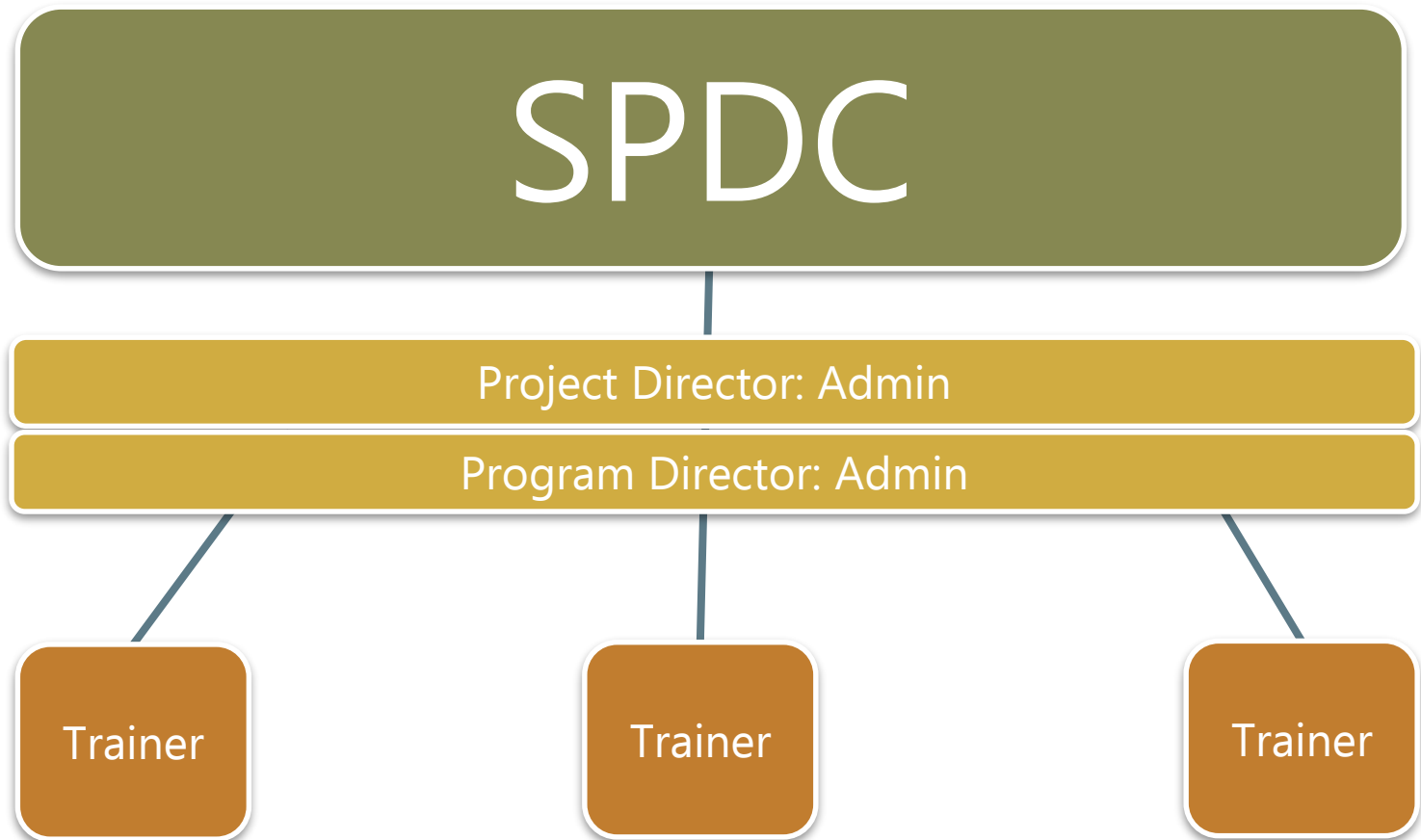
# Assigning User Levels

Working with Partners- Direct Entry



# Assigning User Levels

Working with Partners- Admin Entry



# Log In Screen

GARRETT LEE SMITH MEMORIAL SUICIDE  
PREVENTION EVALUATION



Evaluation Findings

Data Reports

Data Descriptions

Request Data

USERNAME

PASSWORD

LOGIN

**FORGOT USERNAME**

**FORGOT PASSWORD**

**The 2017 GLS National Outcomes Evaluation Report to Congress is now available to download! Click on the "Evaluation Findings" tab above.**

## Welcome to the SPDC

The Suicide Prevention Data Center (SPDC) is an online data collection and management system to support Garrett Lee Smith (GLS) Youth Suicide Prevention and Early Intervention Program grantees in implementing the National Outcomes Evaluation as required by the Garrett Lee Smith Memorial Act (GLSMA). The SPDC is a mechanism for communicating evaluation activities, managing and storing data, and disseminating evaluation findings. The SPDC provides necessary resources to grantees and supports them in implementing the National Outcomes Evaluation. Additionally, the SPDC is a resource for other GLS project stakeholders.

## Background about the GLS program

The GLSMA, signed into law in October 2004, was the first legislation to provide funding specifically for youth suicide prevention programs. Under this legislation, funding was set aside for campuses, states, tribes and US territories to develop, evaluate, and improve early intervention and suicide prevention programs. This funding appropriation authorizes the GLS Suicide Prevention Program, which is administered by SAMHSA's Center for Mental Health Services (CMHS). There are currently 102 GLS

**WWW.SUICIDEPREVENTION-DATACENTER.COM**

# Home Screen

GARRETT LEE SMITH  
MEMORIAL SUICIDE  
PREVENTION EVALUATION



- Home
- Instruments
- Response Monitoring
- Data Download
- Reports
- Administration
- Evaluation Resources
- SPDC Help
- [LOG OUT](#)  
[CHANGE PASSWORD](#)

Print

ICF Demo Grantee - Campus Cohort 11 Site ID: 9975

Instrument	Submission Status	Instrument Details	Data Issues
<a href="#">Training Activities (TASP)</a>	Date of last TASP submission: -	Total number of TASP submitted: 0	Number of data issues to resolve: 0
<a href="#">Prevention Strategies Inventory (PSI)</a>	Current PSI status: No data submitted	Total number of strategies: 0	Number of data issues to resolve: 0
<a href="#">Student Behavioral Health Form (SBHF)</a>	Current SBHF status:		

## ANNOUNCEMENTS

Nov 06, 2017: PSI Data Issues have been refreshed. Please feel free to address these anytime before the next PSI administration window closes.

Oct 30, 2017: Grantee SPDC Administrators can access a new "SPDC Users" report from the Administration tab, to quickly see who has access to the website and what data reporting tasks they have been assigned.

Oct 30, 2017: A new PSI Data Sharing Report has been posted. This can be found under the Reports tab.

## MOST RECENT REPORTS

[PSI Data Sharing Report - State and Tribal Sites](#)

[PSI Data Sharing Report - Campus Sites](#)

# Navigation

GARRETT LEE SMITH  
MEMORIAL SUICIDE  
PREVENTION EVALUATION



- Home
- Instruments
- Response Monitoring
- Data Download
- Reports
- Administration
- Evaluation Resources
- SPDC Help
- LOG OUT  
CHANGE PASSWORD

Print

- PSI
- TASP/TUPS
- SBHF

ICF Demo *Bus Cohort 11* Site ID: 9975

Instrument	Submission Status	Instrument Details	Data Issues
<a href="#">Training Activities (TASP)</a>	Date of last TASP submission: -	Total number of TASP submitted: 0	Number of data issues to resolve: 0
<a href="#">Prevention Strategies Inventory (PSI)</a>	Current PSI status: No data submitted	Total number of strategies: 0	Number of data issues to resolve: 0
<a href="#">Student Behavioral Health Form (SBHF)</a>	Current SBHF status:		

## ANNOUNCEMENTS

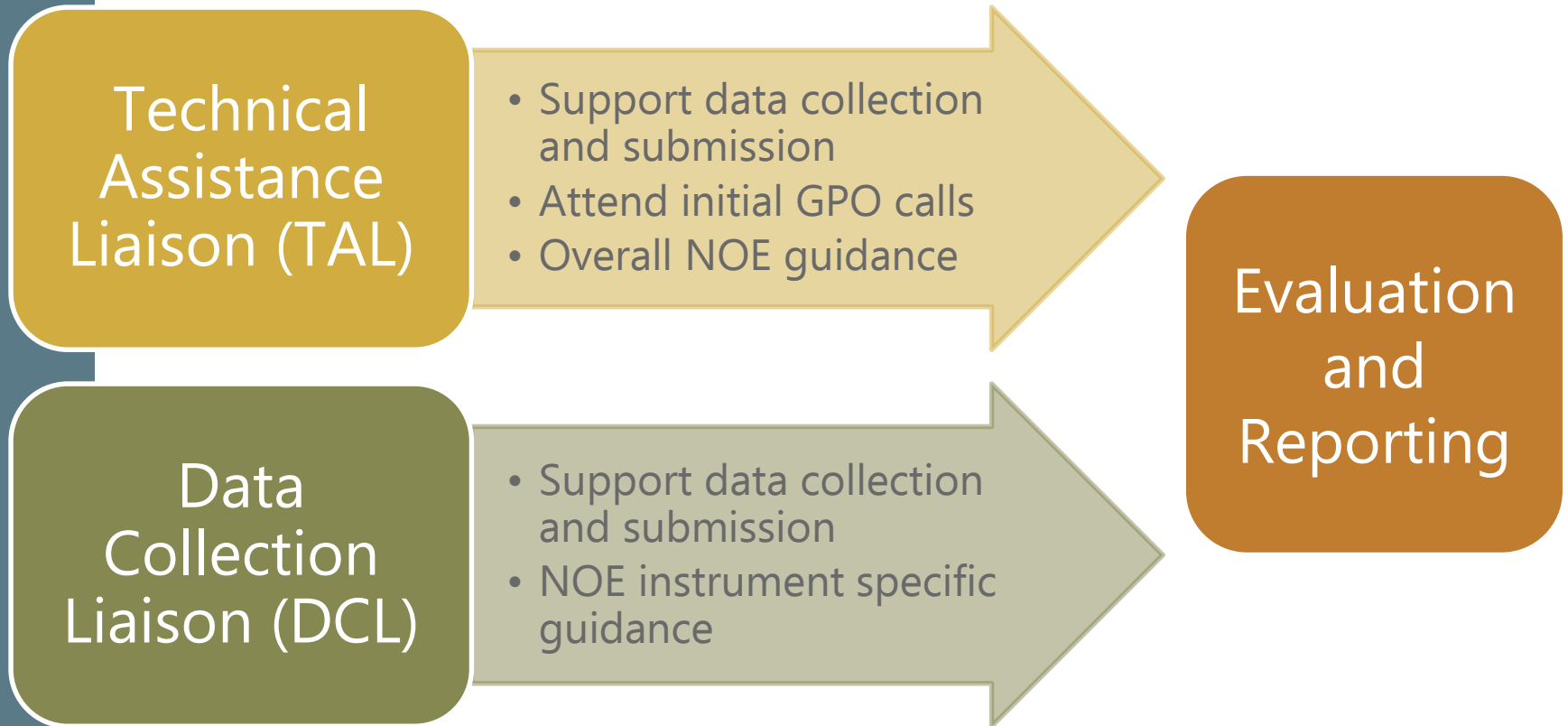
Nov 06, 2017: PSI Data Issues have been refreshed. Please feel free to address these anytime before the next PSI administration window closes.

Oct 30, 2017: Grantee SPDC Administrators can access a new "SPDC Users" report from the Administration tab, to quickly see who has access to the website and what data

# EVALUATION TRAINING AND TECHNICAL ASSISTANCE (TTA)



# Evaluation Training and Technical Assistance



# Technical Assistance Liaison (TAL)

Role	Technical Assistance Liaison (TAL)
<p>Assists with general questions/IRB</p> <p>Assists with SPDC questions</p> <p>Attends initial GPO calls</p>	<p><b>Connie Maples</b></p> <p>Connie.Maples@icf.com</p> <p>956-722-0474 (CST)</p>

# Data Collection Liaison (DCL)

NOE Instrument	Data Collection Liaisons (DCLs)
Prevention Strategies Inventory (PSI)	<b>Nora Kuiper</b> gls-psi@icf.com 404-592-2139 (EST)
Student Behavioral Health Form (SBHF)	<b>Jessie Rouder</b> gls-sbhf@icf.com 516-887-3201 (EST)
Training Activity Summary Page (TASP)	<b>Brandee Hicks</b> gls-tasp@icf.com 404-592-2198 (EST)

# Grantee Roles and Responsibilities

- ✓ Obtain appropriate local approvals including IRB approval
- ✓ Participate in training and technical assistance activities
- ✓ Participate in data collection and submission activities
- ✓ Send monthly call agenda/updates to your TAL



# Mark your Calendar!

*National  
Outcomes  
Evaluation Data  
Collection  
Instruments and  
Data Submission  
Processes*



**December 4, 2018**  
2:00-3:30pm ET



**QUESTIONS?**

THANK  
YOU!

