



# **SAMHSA/GLS GRANT: BRIDGING LAWRENCE AND THE COMMUNITY**

Kristin McKinley  
Associate Director of Research Administration  
August 2014

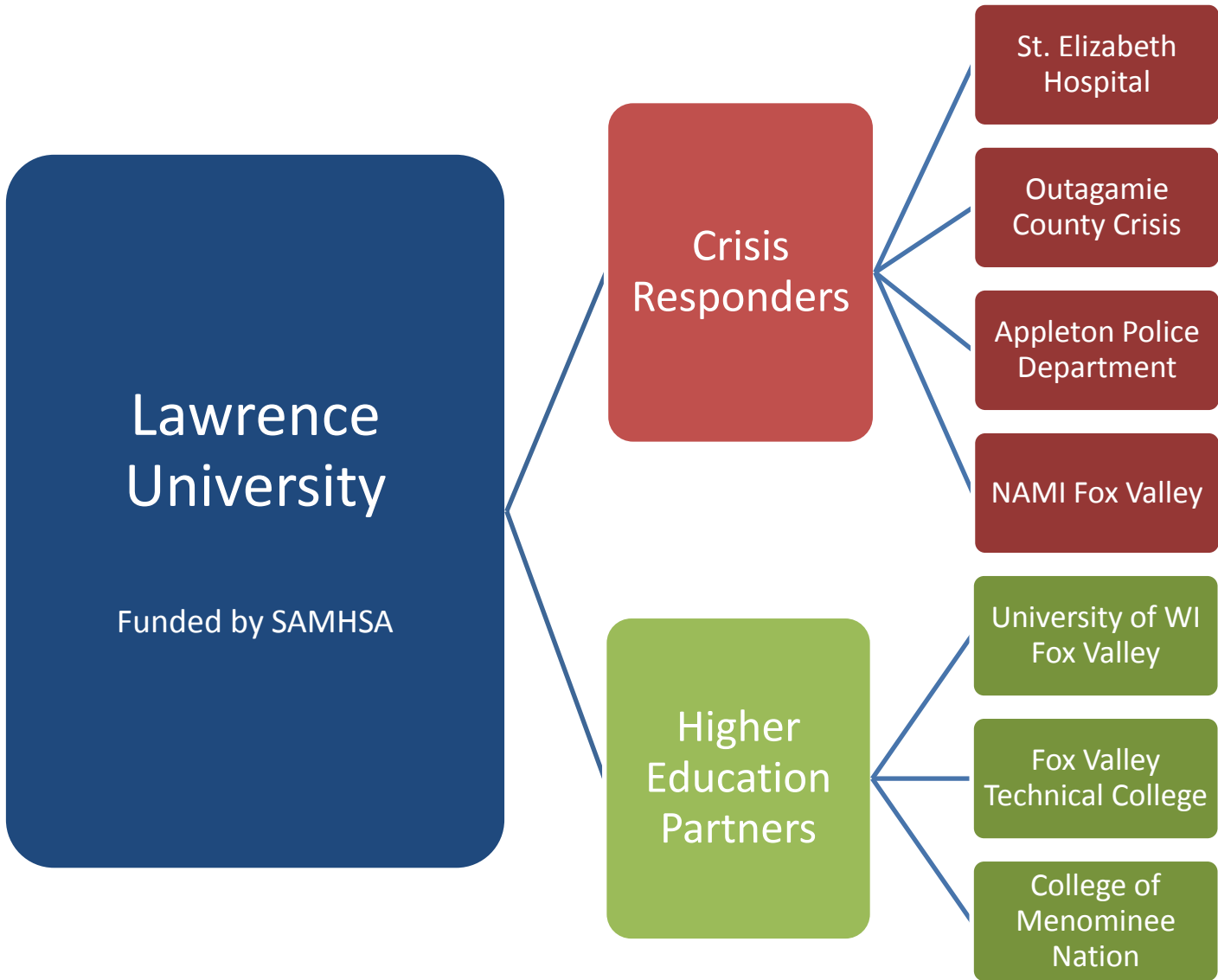


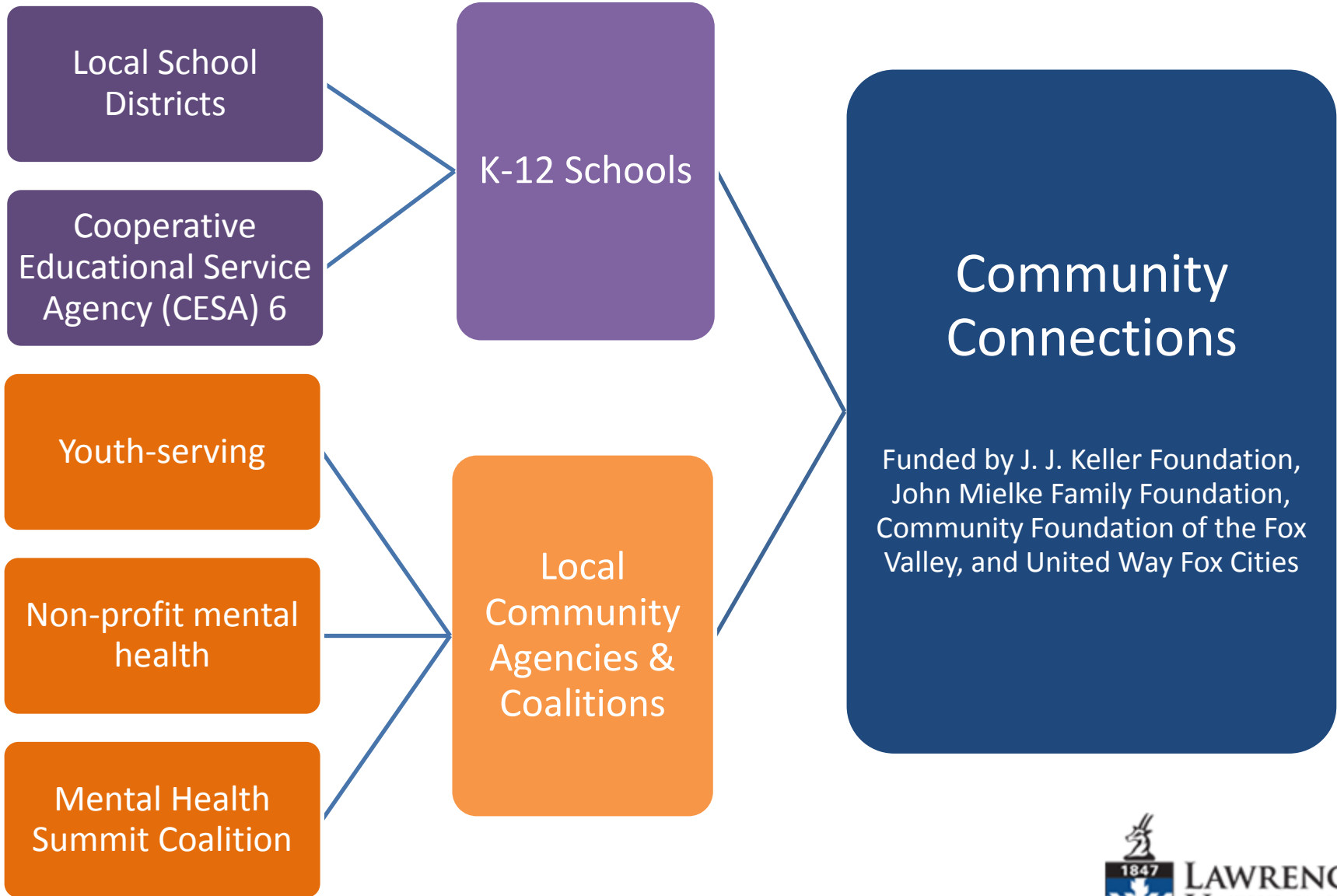
## Lifeline Core Team

- Kathleen Fuchs, project director, director of counseling services
- William Skinner, project evaluator, director of research administration
- Erin Buenzli, director of wellness and recreation
- Chuck Erickson, assistant director of admissions
- Julie Haurykiewicz, director of the center for teaching and learning
- Jerri Kahl, associate director of counseling services
- Kristin McKinley, research associate and SAMHSA program evaluation assistant
- Pa Lee Moua, assistant dean of students for multicultural affairs
- Timothy Schmidt, coordinator of international student services
- Nancy Truesdell, vice president of student affairs and dean of students
- Amy Uecke, associate dean of students for campus life
- Paul Valencic, assistant director of counseling services and alcohol education coordinator



Pa Lee, Julie, Erin, Chuck, Jerri, Bill, Kathleen, Paul and Kristin.  
Not pictured: Tim Schmidt, Nancy Truesdell and Amy Uecke.





# Lessons Learned

COLLABORATE  
PRIORITYZE  
IDENTIFY  
SHARE  
NETWORK  
ACCESS  
ASK



**Front (left to right):** Yvette Dunlap, Appleton Area School District; Sue Jungen, Affinity Behavioral Health; Dr. David Mays, presenter; Kathleen Fuchs, Lawrence University **Back:** Cindy Czarnik-Niemeyer, ThedaCare Behavioral Health; April Schmidt, NAMI Fox Valley; Mary Harp-Jirschele, J. J. Keller Foundation



Stephanie Halter



**Plymouth State**  
UNIVERSITY

# Training Education Arts Mental health



**TRANSITIONS**  
*A Musical About College, Choices and Change*

What do I do when?  
 Tough choices?  
 Want some answers?  
 Sad or alone?

Featuring  
 Will Bolton, Sarah Flower,  
 Alex Hunton, and Rachel Perelli

**SEPTEMBER 8 & 10**  
**7:00 & 8:30 PM EACH NIGHT**  
**OCTOBER 8 • 7:00 PM**

HYDE 120 • Plymouth State University

**FREE ADMISSION—Ages 16 and Up**

Presented as part of a Garrett Lee Smith Campus Suicide Prevention Grant Awarded by SAMHSA, (U.S. Substance Abuse and Mental Health Services Administration) in conjunction with TIGER (Theatre Integrating with Guidance, Education and Responsibility) and NAME NH (National Alliance on Mental Illness of New Hampshire).  
 Funding for these programs, events and trainings are made possible in part by grant #10795MD060463 from SAMHSA.  
 Artistic Direction and Lyrics by Trish Lindberg  
 Musical Direction and Music by Will Ogmundson  
 Choreography by Lisa Travis  
 Stage Management by Chris Slater

**Connect**  
 Training Professionals & Communities  
 Suicide Prevention & Response

A Life in the Community for Everyone  
**SAMHSA**  
 Substance Abuse and Mental Health Services Administration  
 U.S. Department of Health and Human Services



# Discussion Question

What kind of infrastructure might you want to create for sustainability?

Examples:

- Laws, tribal resolutions or mandates
- Policies, campus or community protocols
- Referral networks, MOUs
- Coalitions, Advisory Boards
- Data collection systems
- Care transition systems
- Others?