

# Jumpstarting Your Garrett Lee Smith Campus Suicide Prevention Grant Cohort 13

December 12, 2018, 12:30 – 1:30 pm Eastern Time

Substance Abuse and Mental Health Services Administration (SAMHSA)  
Suicide Prevention Resource Center (SPRC)

*If you are experiencing technical difficulties,  
please go to:*

*<http://www.livemeeting.com/ask> or call  
866.493.2825 (toll free in the US)*

**Dial-In:**

**1-800-619-3395**

**Passcode: 9604867**



***SAMHSA***  
Substance Abuse and Mental Health  
Services Administration

# WebX Support

## WebEx Required Download:

To use WebEx for your operator-assisted conferences, presenters and participants alike must have the WebEx Event Manager installed prior to joining. To download the Event Manager, see the instructions on the [WebEx Downloads](#) page.

**Press \*0 on your phone for  
immediate assistance**



# Agenda

- **Welcome to the Garrett Lee Smith Community**
- **Introduction SPRC**
- **Introduction to Grants Management**
- **Setting Up Your Account**
- **Notice of Award**
- **Continuation/Carryover Funding**
- **Special Terms and Conditions**
- **Budget Monitoring**
- **Reporting Requirements**
- **Resources**
- **Next Steps**

# Your SAMHSA Campus Government Project Officers



**Rosalyn Blogier, LCSW-C**  
Campus Team Coordinator  
[Rosalyn.Blogier@samhsa.hhs.gov](mailto:Rosalyn.Blogier@samhsa.hhs.gov)  
240-276-1842

## **Cohort 13 Assignments:**

St. John's University  
State University of New York-Albany  
University of Colorado-Denver  
University of Nebraska-Lincoln  
University of South Carolina-Columbia  
University of Wyoming



**Portland Ridley**  
[Portland.Ridley@samhsa.hhs.gov](mailto:Portland.Ridley@samhsa.hhs.gov)  
240-276-1848

## **Cohort 13 Assignments:**

Columbus State Community  
College  
Community College of Aurora  
Milwaukee Area Technical College  
Texas Christian University  
University of Oregon  
Valencia College

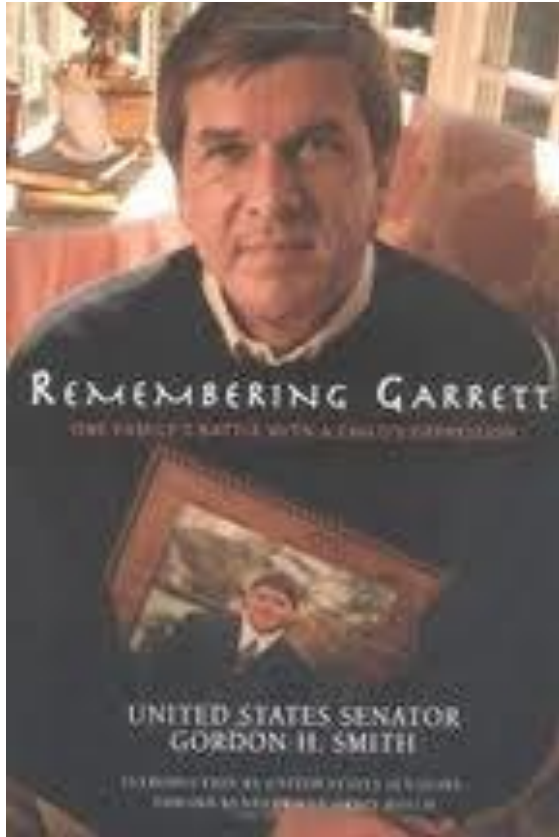


**Jennifer Cappella, MPA**  
[Jennifer.Cappella@samhsa.hhs.gov](mailto:Jennifer.Cappella@samhsa.hhs.gov)  
240-276-1857

## **Cohort 13 Assignments:**

East Carolina University  
North Carolina Agriculture and Technical  
State University  
Pfeiffer University  
Pomona College  
University of North Carolina-Chapel Hill  
University of North Texas-Dallas  
Weber State University

# Garrett Lee Smith Memorial Act (GLS)



- **GLS Campus Suicide Prevention Grant Program**
- **GLS State & Tribal Youth Suicide Prevention Grant Program**
- **Suicide Prevention Resource Center (SPRC)**

# GLS Campus Suicide Prevention Program



# Active GLS Campus Grantees

## Alabama

- University of South Alabama

## Arizona

- University of Arizona

## California

- Azusa Pacific University
- California State University
- Feather River Community College
- Humboldt State University
- Monterey Bay
- National University
- Pomona College
- San Jose State University

## Colorado

- Community College of Aurora
- University of Colorado-Denver

## Connecticut

- Central Connecticut State University
- Connecticut College

## Florida

- College of Central Florida
- Miami-Dade College
- Rollins College
- St. Petersburg College
- University of Central Florida
- Valencia College

## Georgia

- Clark Atlanta University

## Hawaii

- University of Hawaii at Hilo

## Iowa

- Iowa State University of Science and Technology
- University of Northern Iowa

## Idaho

- Boise State University

## Illinois

- National-Louis University
- Northern Illinois University
- Southern Illinois University

## Indiana

- Valparaiso University

## Kansas

- University of Kansas

## Kentucky

- Eastern Kentucky University
- Gateway Community College

## Maryland

- Johns Hopkins University

## Michigan

- Grand Rapids Community College
- University of Michigan
- Wayne State University

## Minnesota

- Carleton College
- Metropolitan State University

## Missouri

- Northwest Missouri State University

## Nebraska

- University of Nebraska-Lincoln

# Active GLS Campus Grantees

## North Carolina

- East Carolina University
- North Carolina Agriculture and Technical State University
- North Carolina Central University
- Pfeiffer University
- University of North Carolina-Chapel Hill

## Nebraska

- Southeast Community College

## New Jersey

- Monmouth University
- Montclair State University

## New York

- Molloy College
- State University of New York-Albany
- St. John's University
- SUNY Stony Brook

## Ohio

- Cleveland State University
- Columbus State Community College
- Kent State University
- Ohio Northern University

## Oklahoma

- College of Muscogee Nation
- East Central University

## Oregon

- University of Oregon
- Western Oregon University

## Pennsylvania

- Gettysburg College
- La Salle University

## Rhode Island

- Providence College

## South Carolina

- University of South Carolina-Columbia

## Tennessee

- University of the South

## Texas

- Texas A&M University College Station
- Texas A&M University Corpus Christi
- Texas Christian University
- University of North Texas-Dallas
- University of Texas Rio Grande Valley
- University of Texas San Antonio

## Utah

- Weber State University

## Virginia

- Old Dominion University

## Washington

- Washington State University

## Wisconsin

- University of Wisconsin Eau Claire
- Milwaukee Area Technical College

## West Virginia

- Bluefield State College
- Marshall University

## Wyoming

- University of Wyoming



# GLS Campus Suicide Prevention: Cohort 13

East Carolina University

Columbus State Community College

Community College of Aurora

Milwaukee Area Technical College

North Carolina Agriculture and Technical

State University

Pfeiffer University

Pamona College

St. John's University

State University of New York, Albany

Texas Christian University

University of Colorado, Denver

University of Nebraska, Lincoln

University of North Carolina, Chapel Hill

University of North Texas, Dallas

University of Oregon

University of South Carolina, Columbia

University of Wyoming

Valencia College

Weber State University

# Active State & Tribal Grantees

## State Grantees

- Alabama
- Arkansas
- Colorado
- Connecticut
- Delaware
- Florida
- Georgia
- Indiana
- Kentucky
- Mariana Islands
- Maryland
- Massachusetts
- Michigan
- Minnesota
- Missouri
- Montana
- Nebraska
- Ohio
- Oklahoma

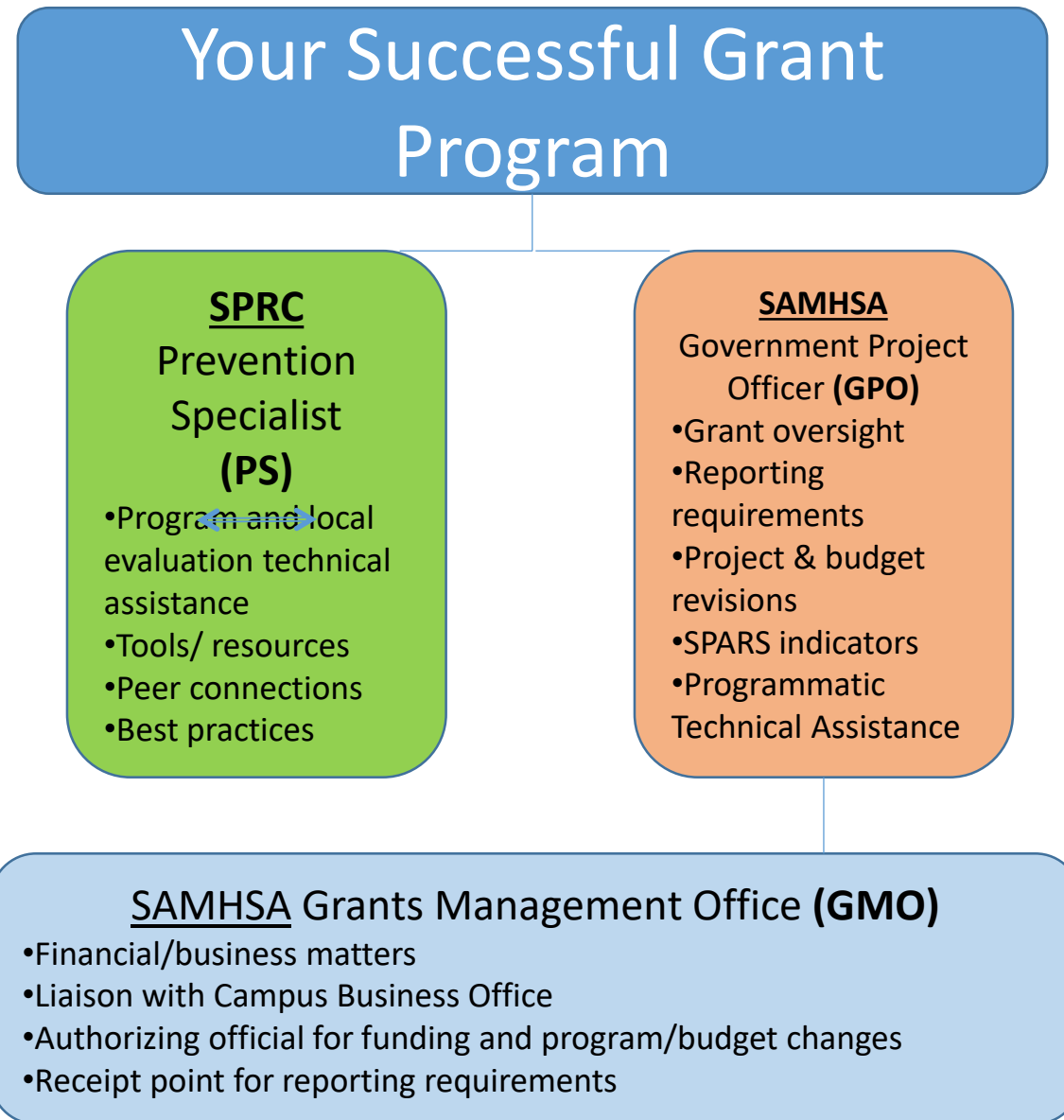
- Oregon
- Pennsylvania
- Rhode Island
- South Carolina
- South Dakota
- Tennessee
- Virginia
- Washington
- West Virginia

## Tribal Grantees

- American Indian Health & Family Services of SE Michigan, Inc.
- Choctaw Nation Oklahoma
- Confederated Salish and Kootenai Tribes
- Fairbanks Native Association
- Kawerak, Inc.
- Muscogee (Creek) Nation
- Native American Health Center, Inc.

- Native Americans for Community Action, Inc.
- NDN Rehab Association of the Northwest
- NW Portland Area Indian Health Board
- Pueblo of San Felipe
- Southcentral Foundation
- Tanana Chiefs
- Tribes & Banks of the Yakama Nation
- United Indian Health Services, Inc.
- Wichita and Affiliated Tribes
- Yellowhawk Tribal Health Center

# Meet Your Support Team



# Role of Your SAMHSA Government Project Officer (GPO)

- Serve as Primary Contact for your grant
- Monitor activities and progress of the project
- Provide programmatic technical assistance
- Review requests for changes to the project
- Help navigate the Federal system and your Federal team
- Assist with, review and approve submissions for Standard and Special Terms and Conditions
- Review required reports and provide feedback.
- Share announcements
- Overseeing and approving SPARS goals and quarterly data submission

# Role of SAMHSA Grants Management Officer (GMO)

## Ernest Stevens

[ernest.stevens@samhsa.hhs.gov](mailto:ernest.stevens@samhsa.hhs.gov)

phone: 240-276-0631

- Serves as Primary Contact for your Financial or Business Office
- Responsible for all business/financial matters
- Enforces grants administration policies & regulations
- Authorizes approval to issue funds, carry over monies & no-cost extensions
- Coordinates with SAMHSA GPO

# Elimination of Evaluation Requirement

**Cohort 13 will NOT be required to participate in the National Outcomes Evaluation.**

# Suicide Prevention Resource Center



**Bonnie Lipton**  
Senior Prevention Specialist  
Grantee and State Initiatives Team  
blipton@edc.org  
617-618-2472

*If you are experiencing technical difficulties,  
please go to:*

*<http://www.livemeeting.com/ask> or call  
866.493.2825 (toll free in the US)*



***SAMHSA***  
Substance Abuse and Mental Health  
Services Administration

# What is SPRC?

- ✓ National Resource Center
- ✓ Support and TA for SAMHSA Grantees
- ✓ Health and Behavioral Health settings
- ✓ National Action Alliance for Suicide Prevention





**DIRECTOR'S CORNER**



### Changing the Conversation

On World Suicide Prevention Day 2016, Jerry Reed reminds us of the importance of changing—and expanding—the conversation about suicide.

**FROM SPRC**



### Suicide Prevention Month Ideas for Action September 2016

In observance of Suicide Prevention Month 2016, SPRC has put together a list of resources to help you get involved.

**REPORT**



### Surveillance Success Stories: Fort Peck Indian Reservation

Following a coordinated emergency response to a suicide cluster in 2010, tribal leaders began collecting data from multiple sources to describe...

**Effective suicide prevention** requires multiple approaches.

LEARN WHAT WORKS.

### Resources and Programs

Find programs, toolkits, fact sheets, and other resources to help you take effective action.

[READ MORE](#)

### Trainings

Build knowledge and skills with our in-person trainings, webinars, and online courses.

[READ MORE](#)

### State Activities

Learn about suicide prevention programs, grants, contacts, and legislation.

[READ MORE](#)

View activity by state:

Select

### SAMHSA GLS & NSSP Suicide Prevention Grantees

Find out what state, tribal, and campus grantees are doing to prevent suicide.

[READ MORE](#)

Stay Connected!



## The Weekly Spark

Enter Your Email

**SIGN UP!**

[VIEW ALL NEWS](#)



Also in This Section

Colleges and Universities

→ Scope of the Problem

→ Consequences of Student Mental Health Issues

→ Getting Started

→ Campus Examples

Featured Tool



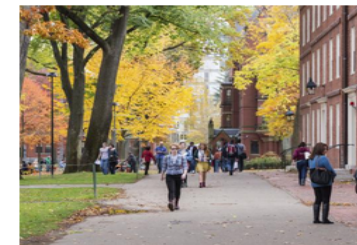
Virtual Learning Lab: Campus Suicide Prevention

This online learning lab consists of different modules that can assist colleges and universities with setting goals, planning, and implementing effective suicide prevention programs and trainings.

## Colleges and Universities

Suicide and suicidal behaviors are a major concern for colleges and universities. Suicide is a leading cause of death among college and university students in the United States (see [Scope of the Problem section](#)).<sup>1</sup> In addition to the students who die by suicide, many others struggle with suicidal thoughts and other mental health problems. Fortunately, colleges and universities also provide unique opportunities for [comprehensive suicide prevention planning](#).

Recognizing the importance of addressing suicide prevention in these settings, the [Substance Abuse and Mental Health Services Administration \(SAMHSA\)](#) has provided grants to support suicide prevention in campus communities since 2005. For more on the Garrett Lee Smith Suicide Prevention Program, see our [Grantees page](#).



## Why Address Suicide Prevention

- › Mental health issues often first appear between the ages of 18 and 24, so colleges are uniquely situated to help these young people.<sup>2</sup>
- › Students' mental health can affect their academic performance.
- › Suicidal thoughts and behaviors can impact the entire campus community.

## How Colleges and Universities Can Take Action

The best way to prevent suicide is to use a [comprehensive approach](#) that includes these key components:

- › Promote [social networks and connectedness](#)
- › Improve [access to mental health services](#) on and off campus
- › [Identify and assist](#) students who may be at risk for suicide
- › [Be prepared to respond](#) when a suicide death occurs



# Virtual Learning Lab: Campus Suicide Prevention

## 4 Modules:

- ✓ Collaboration
- ✓ Crisis Protocols
- ✓ Mental Health Resources
- ✓ Prevention Planning

Do your protocols clearly and consistently describe what to do when someone is in crisis?

NEW TO THIS MODULE?  SEEN THIS BEFORE?

SPRC | VIRTUAL LEARNING LAB | CRISIS PROTOCOLS

2 Choose your strategies

Successfully preventing suicide requires a variety of strategies that complement each other and are part of a comprehensive approach.

When choosing your strategies, consider best practices for prevention: select programs and trainings that incorporate the principles of effective prevention, that follow safe messaging guidelines, and that have evidence of effectiveness. [READ MORE](#)

Select any of the common questions about this step to learn more.

- ? What are the best practices for programs and trainings?
- ? Are all gatekeeper trainings similar?
- ? How can I make sure the program I select is a good fit?

SPRC | VIRTUAL LEARNING LAB | PREVENTION PLANNING

<http://go.edc.org/VLL>



# SPRC Services for Grantees



# Questions?



**Bonnie Lipton, MPH**

Senior Prevention Specialist

[blipton@edc.org](mailto:blipton@edc.org)

617-618-2472



# Questions?



# Notice of Award (NOA)

**Official document that issues and awards funding for each budget year**

See your NOA for:

- Your SAMHSA Grant Number (SM12345)
- Award Amount & Budget/Project Period
- Allowable & non-allowable activities, regulations, & restrictions
- Reporting Requirements
- Standard & **Special** Terms & Conditions of award

***\*NOAs are sent to the project director and business official as identified in your proposal\****

# NOA: Finding your Grant Number



Campus Suicide Prevention  
Department of Health and Human Services  
Substance Abuse and Mental Health Services Administration  
Center for Mental Health Services

Notice of Award

Issue Date: ~~09/30/2013~~

**Grant Number:** 1U79SM061465-01

**Program Director:**

[REDACTED]

**Project Title:**

[REDACTED]

Grantee Address	Business Address
[REDACTED]	[REDACTED]
[REDACTED]	

**Budget Period:** ~~09/30/2013~~ — ~~08/31/2014~~

**Project Period:** ~~09/30/2013~~ — ~~08/31/2016~~



# How to Set Up Your Account and Draw Down Funds

- Payments are made electronically via HHS Division of Payment Management System (DPM)
- Your grant or campus Business Office must set up an account with DPM in order to draw down funds
- A 12 digit Entity Identification Number (EIN) is assigned to your grant

To create and manage your DPM account, contact:

**HHS Division of Payment Management (DPM)**

**1-877-614-5533**

**Website Address: [www.dpm.psc.gov](http://www.dpm.psc.gov)**

# Project Period vs. Budget Year

## Project Period

November 30, 2018 - November 29, 2021

## Budget Year

Budget Year 1: Nov. 30, 2018 - Nov. 29, 2019

Budget Year 2: Nov. 30, 2019 - Nov. 29, 2020

Budget Year 3: Nov. 30, 2020 - Nov. 29 2021

# Continuation Funding

Grantees must submit non-competing continuation applications to receive each subsequent years' funding, beyond year 1.

More information can be found at:

<https://www.samhsa.gov/grants/continuation-grants>

# Standard & Special Terms and Conditions

## **SECTION III – TERMS AND CONDITIONS – 1U79SM061440-01**

This award is based on the application submitted to, and as approved by, SAMHSA on the above-title project and is subject to the terms and conditions incorporated either directly or by reference in the following:

## **SECTION IV – SM Special Terms and Condition – 1U79SM061440-01**

### **REMARKS:**

Health and Human Services (HHS) is initiating the policy to assign "P" accounts to all grantees including Universities and Educational institutions. The following is an excerpt from Section 25 of the Standard Terms of Award: "The Division of Grants Management created a Public Assistance (P) Account in the Division of Payment Management's (DPM) payment management system to provide a separate accounting of federal funds per SAMHSA grant. When discussing your account with the DPM's Account Representative, provide the document number identified on Page 2 of the Notice of Award under Section I - AWARD DATA, Fiscal Information."

# Behavioral Health Disparities Impact Statement

Submit a Statement that discusses:

1. Sub-population vulnerable to disparities as identified in your proposal, including a proposed number of students to be reached;
2. A quality improvement plan based on data collection;
3. A description of how your grant will adhere to *The National Standards for Culturally and Linguistically Appropriate Services in Health and Health Care*.

# Important Language in your Notice of Award

*Recipients are expected to plan their work to ensure that funds are expended within the 12-month budget period reflected on this Notice of Award. If activities proposed in the approved budget cannot be completed within the current budget period, SAMSHA cannot guarantee the approval of any request for carryover of remaining unobligated funding.*

# Questions?



# Budget Monitoring

**Funds can be moved within and between approved cost categories *without* prior approval, if the amount being adjusted is less than 25% of total annual budget.**

\*Adjustments should be “reasonable, allowable, and allocable”\*

\*Always alert your GPO if you plan to adjust your budget, even when below the 25% threshold\*



# Match Requirement

\$1 : \$1

*Must be met annually*

# Funding Restrictions

- Grants funds must be used to supplement and not supplant any other Federal, State, or local funds available to carry out activities under the grant
- Data collection & evaluation costs: cannot exceed 20% of your **annual** budget
- Grantees must comply with SAMHSA's standard funding restrictions (Appendix H)

***These non-fundable activities cannot be used toward match costs/ in-kind contributions***

# Supplantation is not allowed

- Grants funds must be used to supplement -- “add to” -- current campus suicide prevention programs and resources
- Federal law prohibits grantees from supplanting – “replacing” state, local, or agency funds with federal funds, that is-
- Existing funds for a project, staff, resources may not be displaced by SAMHSA funds and reallocated for other campus operational expenses.
- Using Federal grant funds to defray any costs that the recipient already is obligated to pay

# Other Funding Restrictions

- Tuition waivers, tuition reimbursement, remission
- Scholarships, Fellowships, Student Aid
- Stipends
- Curriculum fees
- Incentives for staff and faculty members
- Meals, sporting events, recreation, entertainment

***These non-fundable activities cannot be used toward match costs/ in-kind contributions***

# Allowable Costs

- Incentives for **students ONLY**  
(\$30 non-cash value) per student per event
- Snacks and light refreshments  
(\$3.00 per participant)

# Required and Allowable Activities

## Required Activities:

- Create a network infrastructure
- Train college students, faculty, and staff
- Provide mental and substance use disorder screenings and assessment
- Reach out to students about available resources

## Allowable Activities:

- Educate and disseminate informational materials
- Promote National Suicide Prevention Lifeline 1-800-273-8255 (TALK).
- Provide services
- Conduct Research to improve student mental health
- Support campus groups
- Implement best practices

# Reporting Requirements

## Submit to DPM

- ✓ PSC-272, Quarterly Financial Reports

## Submit via eRA

- ✓ Continuation Application/Progress Report
- ✓ Annual Report
- ✓ SF-425, Annual Federal Financial Report

# Actions Requiring Prior Written Approval

- **Change in Scope**
- **Change in Key Personnel**
  - **Project Director**
- **Re-Budgeting of Funds**
  - **Cumulative amount of transfers among direct/indirect cost categories exceeding 25% of the total annual budget year**
- **Extension of the Budget Period with or without Additional Funds**
- **Carryover > 25% of annual budget**

*\*See the SAMSHA website for instructions on requesting prior written approval:  
<https://www.samhsa.gov/grants/grants-management/post-award-changes>\**



All post-award processes will be managed exclusively through the eRA system which requires the approved Program Director/Project Director (PD) to be registered in eRA Commons.

# Questions



# Grants Management Website: [www.samhsa.gov](http://www.samhsa.gov)



[Home](#) | [Site Map](#) | [Contact Us](#)

[Find Help & Treatment](#)

**[Grants](#)**

[Data](#)

[Programs & Campaigns](#)

[Newsroom](#)

[About Us](#)

[Publications](#)

## Fiscal Year 2019 Grant Announcements

[Applying for a New SAMHSA Grant](#)

[Registration Requirements](#)

[Submitting Your Application](#)

[Forms And Resources](#)

[Guidelines For Consumer and Family Participation](#)

[Grant Review Process](#)

## Continuation Grants

[Grants Management](#)

[Notice of Award \(NOA\)](#)

[Policies And Regulations](#)

[Reporting Requirements](#)

[Post-Award Changes](#)

[Grant Closeout](#)

[Disparity Impact Statement](#)

[GPRA Measurement Tools](#)

## Contact Grants

### More Grants Information

[2018 Grant Awards](#)

[Grant Awards by State](#)

[SAMHSA Grant Awards Archive](#)

[Block Grants](#)

[Post-Award Changes Requiring Prior Approval](#)



To apply for a SAMHSA grant, you must register on Grants.gov.

[Register](#) | [Search](#) | [Apply](#)

[National Suicide Prevention Lifeline](#)  
**1-800-273-TALK (8255)**

Free and confidential support for people in distress, 24/7.

[Disaster Distress Helpline](#)  
**1-800-985-5990**

Immediate crisis counseling related to disasters, 24/7.

[National Helpline](#)  
**1-800-662-HELP (4357)**

Treatment referral and information, 24/7.

**Find treatment facilities confidentially and anonymously.**

[Learn About Our Locator](#)



# Resources to Keep Handy

1. Notice of Award (NOA)
4. Approved Budget and Application
5. Approved Workplan
6. SAMHSA web address:  
<https://www.samhsa.gov/grants>

# Next Steps

- Be in touch with your GPO**
- Read your Notice of Award (NOA).**
- Set up your DPM account.**
- Participate on SAMHSA Team Call**
- Submit an official response to your Standard and Special Terms and Conditions (outlined in your NOA) into eRA by deadline**

# Contact Your GPO



**Rosalyn Blogier, LCSW-C**  
Campus Team Coordinator  
[Rosalyn.Blogier@samhsa.hhs.gov](mailto:Rosalyn.Blogier@samhsa.hhs.gov)  
240-276-1842

## Cohort 13 Assignments:

St. John's University  
State University of New York-Albany  
University of Colorado-Denver  
University of Nebraska-Lincoln  
University of South Carolina-Columbia  
University of Wyoming



**Portland Ridley**  
[Portland.Ridley@samhsa.hhs.gov](mailto:Portland.Ridley@samhsa.hhs.gov)  
240-276-1848

## Cohort 13 Assignments:

Columbus State Community  
College  
Community College of Aurora  
Milwaukee Area Technical College  
Texas Christian University  
University of Oregon  
Valencia College



**Jennifer Cappella, MPA**  
[Jennifer.Cappella@samhsa.hhs.gov](mailto:Jennifer.Cappella@samhsa.hhs.gov)  
240-276-1857

## Cohort 13 Assignments:

East Carolina University  
North Carolina Agriculture and Technical  
State University  
Pfeiffer University  
Pomona College  
University of North Carolina-Chapel Hill  
University of North Texas-Dallas  
Weber State University

# Questions



# Thank You.

SAMHSA's mission is to reduce the impact of substance abuse and mental illness on America's communities.

<https://www.samhsa.gov/grants>

1-877-SAMHSA-7 (1-877-726-4727) • 1-800-487-4889 (TDD)