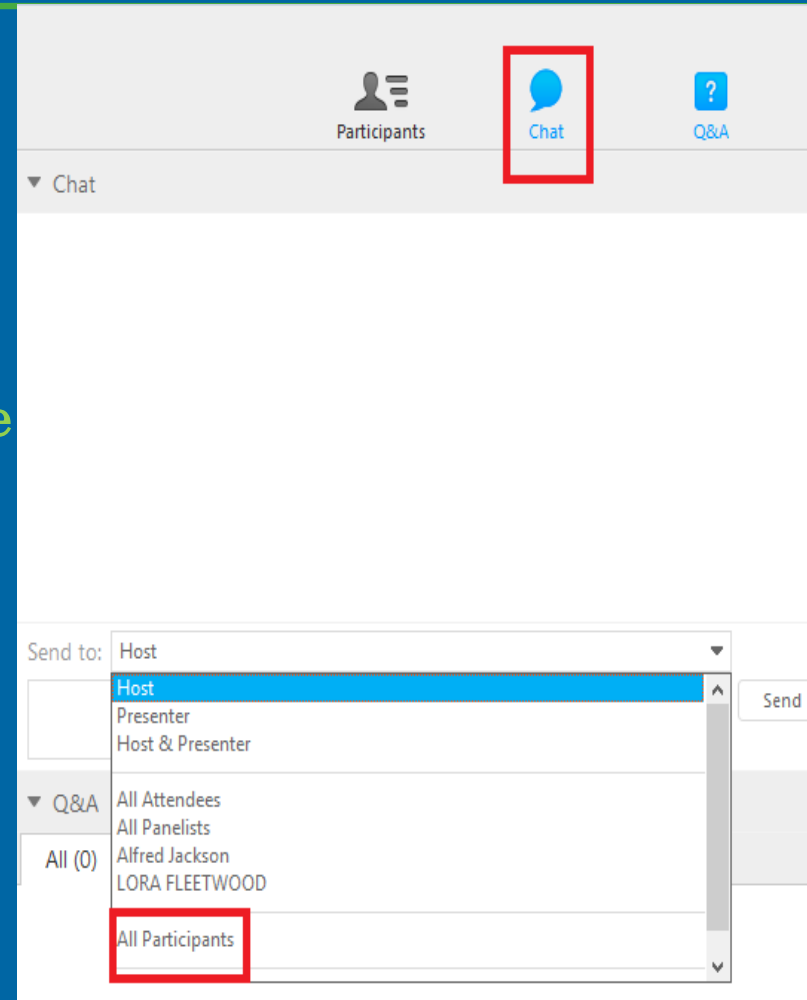


Welcome to the Campus Sustainability Training Series

- ✓ We will be starting shortly.
- ✓ As we are waiting, please click on the chat icon on the top right corner of your screen. Select **“All Participants”** and chat in your answer to **“What was the most helpful thing you learned from the sustainability training series?”**
- ✓ If you have any technical issues, chat your question in the **Q&A pod** located below the Chat pod.
- ✓ Please do not put us on hold. The hold music will play for everyone!



Campus Sustainability Training Series

Session #4: Secure Funding & Resources

May 22, 2017 2-3:30pm EST

Irene Cho, Ed.M, Suicide Prevention Resource Center
Bonnie Lipton, MPH, Suicide Prevention Resource Center

Presented by the Suicide Prevention Resource Center &
Substance Abuse and Mental Health Services Administration



Funding and disclaimer



The Suicide Prevention Resource Center at EDC is supported by a grant from the U.S. Department of Health and Human Services (HHS), Substance Abuse and Mental Health Services Administration (SAMHSA), Center for Mental Health Services (CMHS), under Grant No. 5U79SM062297.

The views, opinions, and content expressed in this product do not necessarily reflect the views, opinions, or policies of CMHS, SAMHSA, or HHS.

Your Speakers Today



Irene Cho, SPRC

Prevention Specialist



Bonnie Lipton, SPRC

Prevention Specialist



Joseph Behen


School of the Art
Institute of Chicago



Robert Small

University of
Southern Maine

Technical Orientation Slide

- ✓ Type any technical questions at anytime into the Q&A pod on the right-hand side of your screen.
- ✓ You can make the presentation screen larger at any time by clicking on the “Full Screen”  button in the upper right hand side of the slide presentation. If you hit “Esc” it will return to normal view.
- ✓ To mute or unmute your line, press *6.

Technical Orientation Slide

The screenshot displays a Cisco WebEx interface. On the left, a blue slide titled "Welcome to the Campus Sustainability Training Series!" contains four bullet points. The main interface shows a "Chat" pod on the right with a red box around the "Chat" icon. Below the slide, a smaller inset shows the "Send to" dropdown menu with "All Participants" selected and highlighted with a red box. The interface also shows "Participants" and "Q&A" pods.

File Edit Share View Communicate Participant Event Help

Quick Start Event Info Session 1 po... x

01: Welcome to the Ca

Participants Chat Q&A

Welcome to the Campus Sustainability Training Series!

- We will be starting shortly.
- As we are waiting, please chat your name and campus to the Chat pod on the right-hand side of your screen.
- If you have any technical issues, chat your question in the Q&A pod located below the Chat pod.
- Please do not put us on hold. The hold music will play for everyone.

Presented by the Suicide Prevention Resource Center & Substance Abuse and Mental Health Services Administration

SPRC

Substance Abuse and Mental Health Services Administration SAMHSA

Send to: Host
Host
Presenter
Host & Presenter

Q&A
All Attendees
All Panelists
Alfred Jackson
LORA FLEETWOOD
All Participants

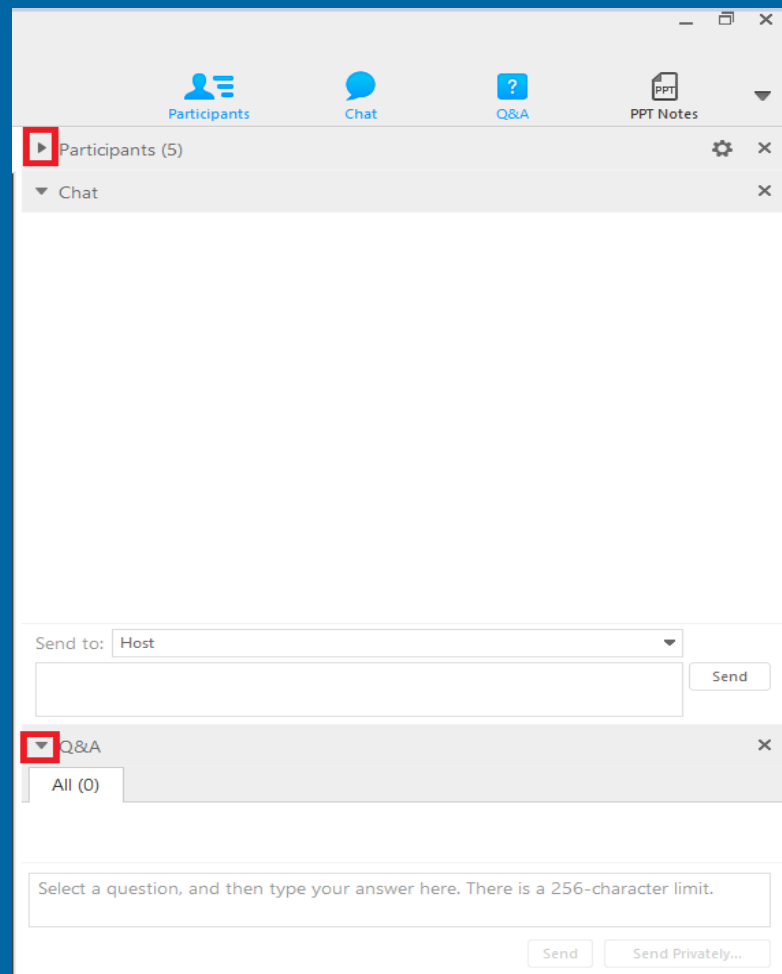
Send to: Everyone

Select a question, and then type your answer here. There is a 256-character limit.

Send Send Privately...

Technical Orientation Slide

- ✓ You can maximize the chat pod by clicking on this icon  next to the Q&A and Participants pods.



Chat in your caption!

Select All Participants before you send your chat!



Marazzi, Philip. (2016). [Comedy Wildlife Photo Awards Finalists 2016]. Retrieved from https://www.comedywildlifephoto.com/gallery/2016_finalists.php#&gid=1&pid=29

Reminder: Overview of Series

- ✓ January 23rd: Adopt a Sustainability Mindset
- ✓ February 27th: Cultivate Partnerships
- ✓ April 24th: Build Momentum and Foster Leadership

✓ **May 22nd: Secure Resources/ Funding**

- Leaving a Legacy: Translating Your Recommendations Into Action

<http://go.edc.org/Sustain1>



What We Want From You

- ✓ Be engaged/talk
- ✓ Learn from each other
- ✓ Mute phone line when not speaking (and never put us on hold!)
- ✓ Complete homework, if possible
- ✓ Be respectful
- ✓ Ask lots of questions!

Agenda



- ✓ Sharing Sustainability Success Stories!
- ✓ Today's Topic: Securing Resources and Funding
- ✓ Panel Discussion: Joseph Behen and Robert Small
- ✓ Wrapping Up: Next Steps and Lessons Learned

Let's Celebrate Your Sustainability Success Stories!



Today's Topic: Securing Resources/Funding

- ✓ No one size fits all model for funding
- ✓ Grant/suicide prevention coordinator
- ✓ Not everything can be sustained!
 - ✓ Importance of strategic planning when have limited resources
 - ✓ Prioritize activities/goals
 - ✓ Secure resources to support staff time

“[It’s one thing to maintain a house as opposed to building the home. We had the money to build the house [from the GLS grant] and now we are maintaining it.
—GLS campus alumni

Strategies for Continuing Activities After Funding Ends

- ✓ Integrated program components into a larger organization
- ✓ Tapped into partner resources (financial and other)
- ✓ Reconfigured the program to adjust for fewer resources
- ✓ Used technology in place of face-to-face communication
- ✓ Stockpiled resources towards the end of the grant (e.g., ordering materials, re-certifying trainers)
- ✓ Found a champion



Partner	Activity
Residence Life	Coordinate/fund gatekeeper trainings for Residence Life students leaders and staff
Student Mental Health Group (Active Minds, NAMI)	Promote mental health events, workshops, and campaigns around campus
Graduate pharmaceutical studies department	Coordination of safe disposal of medications initiative
Graduate psychology or social work department	Graduate students administer PHQ-2 survey at Health Services for all students
Local substance abuse coalition	Bring AA/NA meetings to campus (or coordinate promotion of off-campus mtgs)
Community Veterans Affairs Office	Coordinate MH events and resources for student veterans on and off campus
State suicide prevention office	Pay to train providers on campus in different mental health trainings, (i.e., Mental Health First Aid, RSSR, etc).

Communicating for Sustainability

- ✓ Effectively communicating to the administration about the positive impact your grant has made on your campus.
 - Sharing existing data to show the importance of suicide prevention efforts
 - Including stories from students
 - Involving students!

“[You] have to fight with a lot of statistics and passion. My fighting didn’t fall on deaf ears.”

—GLS campus alumni

Other Funding Opportunities

- ✓ Discuss ways to obtain the matching funds or in-kind donations required from the GLS grant beyond the grant period
- ✓ Consider a broader topic than suicide prevention, but add suicide prevention to the activities
- ✓ Ask your grant's department to do a funding search or visit <https://www.grants.gov/web/grants/search-grants.html>
- ✓ Sign up for [Weekly Spark](mailto:cssp_listserv@utlists.utexas.edu) and other list-serves (i.e., cssp_listserv@utlists.utexas.edu)
- ✓ Connect with the state contact for state funding for suicide prevention



Suicide Prevention Resource Center

About Suicide Effective Prevention Resources & Programs Training & Events News & Highlights

Organizations



8 2 5 5
1 (800) 273 TALK

View a State

- Select a State -

Filter By

Type

Select

Populations

Select

Settings

Select

About Suicide

Select

Alabama

States

- National Action Alliance for Suicide Prevention
- National Organizations and Federal Agencies

Grantees

Core Competencies

State Suicide

State Coalition Website: [Alabama Suicide Prevention Task Force](#)

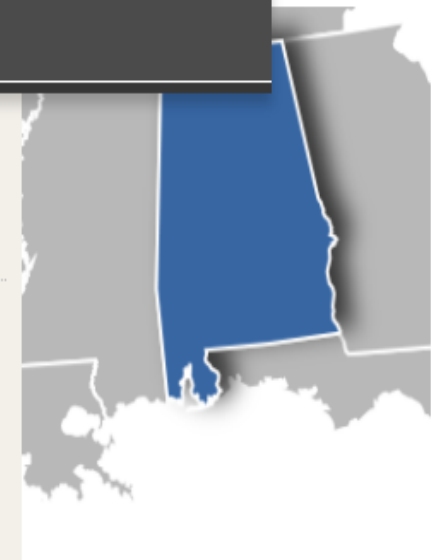
Contacts

Betsy Cagle

Injury Prevention Programs Manager
 Alabama Department of Public Health
 RSA Tower, Suite 966
 Montgomery, AL 36104
 United States
Phone: (334) 206-3995
Betsy.Cagle@adph.state.al.us

Judith Harrington, PhD

Past President
 Alabama Suicide Prevention and Resources Coalition (ASPARC)
 2330 Highland Avenue S.
 Birmingham, AL 35205
 United States
Phone: (205) 907-3266
harringtonjudith@bellsouth.net



Alabama

State Suicide Prevention Website: Alabama Department of Public Health

State Coalition Website: Alabama Suicide Prevention Task Force

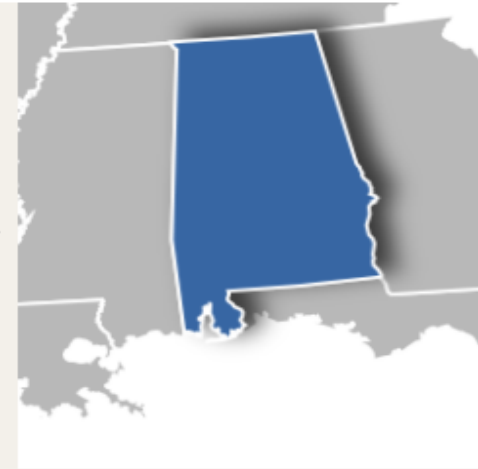
Contacts

Betsy Cagle

Injury Prevention Programs Manager
Alabama Department of Public Health
RSA Tower, Suite 966
Montgomery, AL 36104
United States
Phone: (334) 206-3995
Betsy.Cagle@adph.state.al.us

Judith Harrington, PhD

Past President
Alabama Suicide Prevention and Resources Coalition (ASPARC)
2330 Highland Avenue S.
Birmingham, AL 35205
United States
Phone: (205) 907-3266
harringtonjudith@bellsouth.net



State and Community Organizations

NAMI Alabama
(800) 626-4199

Northwest Alabama Mental Health Center
(205) 387-0541

AFSP Alabama
(205) 355-1876

Current GLS and NSSP Grantees

Alabama Department of Public Health

Alabama State University

University of South Alabama

[➔ See Full Listing of Grantees](#)

Prevention Plans

Healthy Alabama 2010

What Do We Mean by Infrastructure?

- ✓ Campus-wide policies (ex: guns not allowed on campus)
- ✓ Campus-wide protocols (crisis response, postvention)
- ✓ State legislation (suicide awareness, trainings)
- ✓ Referral networks
- ✓ MOUs
- ✓ Advisory Councils/Steering Committees
- ✓ Data collection systems

Activity	Don't Need as Much Staff Time To...
Memorandum of Understanding/Data sharing agreements	<ul style="list-style-type: none"> ✓ Track down data ✓ Communicate with providers when students are in crisis
Established crisis protocols	<ul style="list-style-type: none"> ✓ Communicate with faculty/staff when students are in crisis ✓ Search for information for medical withdrawals, emergency notifications, etc.
Enhanced outside providers referral list	<ul style="list-style-type: none"> ✓ Contact providers regarding availability and qualifications/skills ✓ Communicate with providers about students' needs
Suicide Prevention Task Force	<ul style="list-style-type: none"> ✓ Communicate with on and off campus partners about MH/SP ✓ Plan and implement activities ✓ Educate and train partners about MH/SP

Panel Discussion: Securing Resources/Funding

Joe Behen

School of the Art Institute of
Chicago

jbehen@artic.edu



Bob Small

University of Southern Maine

robert.small@maine.edu

1. Brief overview of your campus and grant goals



Joseph Behen
School of the Art
Institute of Chicago



Robert Small
University of
Southern Maine

2. How did you identify what activities to continue after the grant?



Joseph Behen
School of the Art
Institute of Chicago



Robert Small
University of
Southern Maine

3. Which departments did you work with to sustain your efforts?



Joseph Behen
School of the Art
Institute of Chicago



Robert Small
University of
Southern Maine

4. Where did you receive your funding from and how did you build your case for funding beyond the GLS grant?



Joseph Behen
School of the Art
Institute of Chicago



Robert Small
University of
Southern Maine

5. Was there any infrastructure that you embedded to existing structures during the grant that were helpful for sustaining any of your efforts beyond the grant?

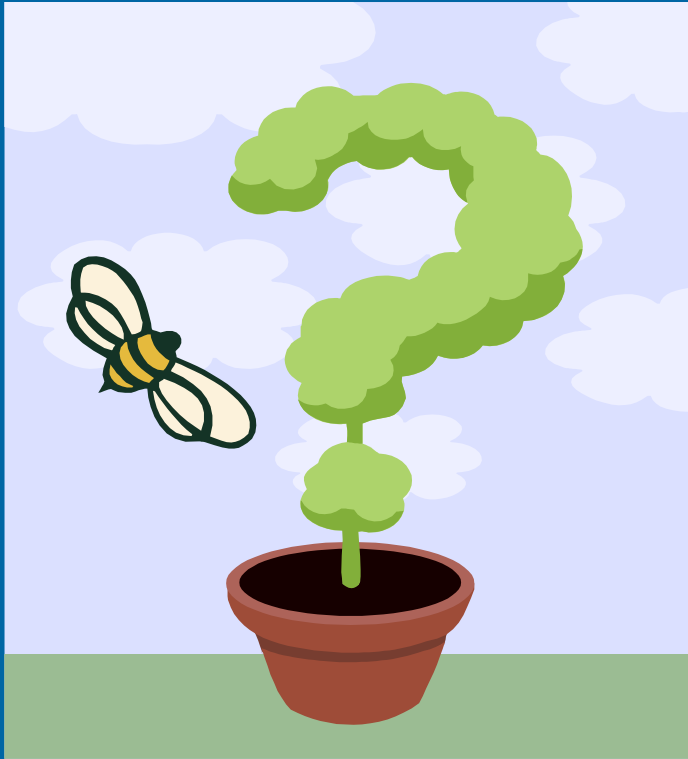


Joseph Behen
School of the Art
Institute of Chicago



Robert Small
University of
Southern Maine

Questions



Joseph Behen
School of the Art Institute of
Chicago
jbehen@artic.edu

Robert Small
University of Southern
Maine
robert.small@maine.edu

Lessons Learned

- ✓ Adopt a Sustainability Mindset
- ✓ Cultivate Partnerships
- ✓ Build Momentum & Foster Leadership
- ✓ Secure Funding & Resources



Suicide Prevention Resource Center
Promoting a public health approach to suicide prevention

Leaving a Legacy



Recommendations for
sustaining suicide
prevention programs

<http://go.edc.org/Sustain1>

Recap of Homework

✓ Homework:

- Look over your answers from the worksheet you filled out for session 1 *Prioritizing Your Work Worksheet*
- Fill in worksheet *Sustainability Action Plan*

Sustainability Action Plan Worksheet

Sustainability Action Plan Worksheet

Think about what suicide prevention objectives you plan on continuing after your Garrett Lee Smith ends (refer to the [Prioritizing Your Work Worksheet](#)). For each objective, fill out the information to help you figure out what needs to be done to sustain this objective.

Objective:			
What is needed for sustainability (resources, tools, partners)?			
What strategies will you use?			
How to Gain/ Maintain Resources and Tools	How to Leverage Existing Partners/ Which New Ones to Approach	Who to Keep Informed, How	Other (e.g. Potential Barriers, Anticipated Outcomes)

Sustainability Action Plan Worksheet

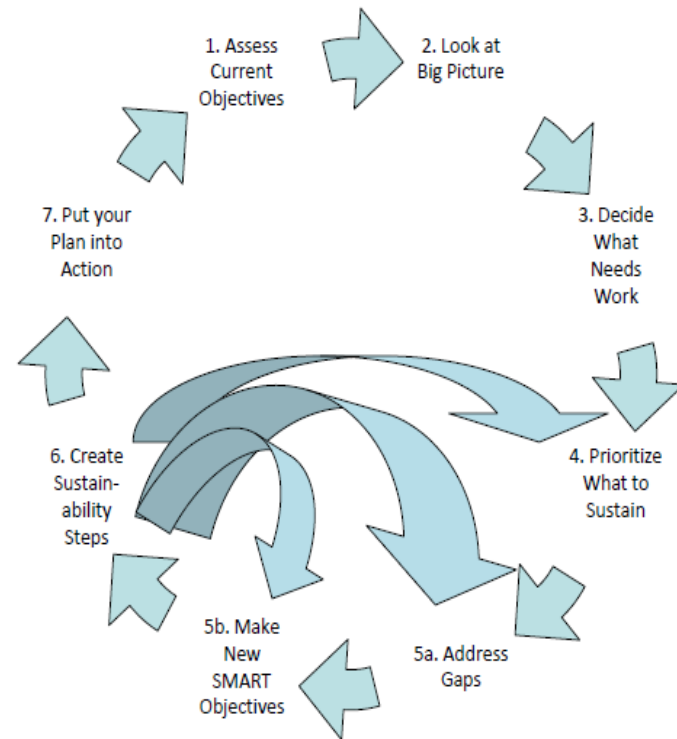
Action Steps to Set Up Objective for Sustainability	Lead/Responsibility	Team Members/Others Involved	Timeline (Begin By, Complete By)	Notes

Next Steps & Lessons Learned

- ✓ SPRC Sustainability Guide and Workbook
- ✓ Examples of Campus Sustainability Plan from University of West Florida & University of Massachusetts Amherst:
<http://www.sprc.org/grantees/grantee-resources>

Planning for Sustainability – A Model

This guide will take you through seven steps of sustainability planning, as illustrated in the diagram below. Although we will follow a sequential process, you may need to go back to earlier steps to be able to move forward successfully. The larger arrows identify some specific steps where it's likely you may need to re-check your priorities and objectives once your action planning has begun.



Next Steps & Lessons Learned

- ✓ Check your inbox and fill out the survey from Scott Formica (SSRE).
- ✓ Website: <http://glscampussustainability.com/>
- ✓ Meeting notes and presentation will be posted on the SPRC website.
- ✓ How to keep in touch with participants:
 - Email addresses on *Sustainability Series Participants* excel spreadsheet
- ✓ Questions?

Thank you!

Dedication

To those who have lost their lives by suicide,

To those who struggle with thoughts of suicide,

To those who have made an attempt on their lives,

To those caring for someone who struggles,

To those left behind after a death by suicide,

To those in recovery, and

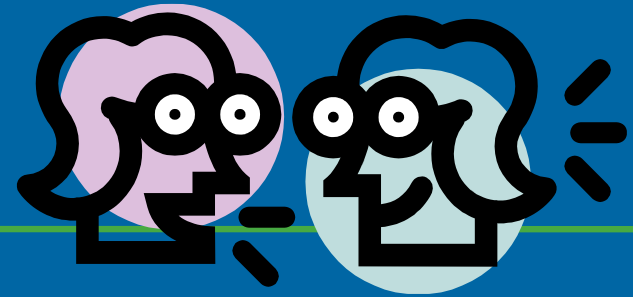
To all those who work tirelessly to prevent suicide and suicide attempts in our nation.

We believe that we can and we will make a difference.



2012 National Strategy for Suicide Prevention

Contact Information



Joseph Behen, School of the Art Institute of Chicago
jbehen@artic.edu

Irene Cho, Suicide Prevention Resource Center
icho@edc.org

Bonnie Lipton, Suicide Prevention Resource Center
blipton@edc.org

Robert Small, University of Southern Maine
robert.small@maine.edu