



Suicide Prevention Resource Center

Promoting a public health approach to suicide prevention



The nation's only federally supported resource center devoted to advancing the *National Strategy for Suicide Prevention*.

Creating a Legacy

Session 4

Suicide Prevention Resource Center's Workshop Series for
2nd Year GLS Grantees

August 19, 2014

SPRC Facilitators



Julie Ebin
Senior Prevention
Specialist



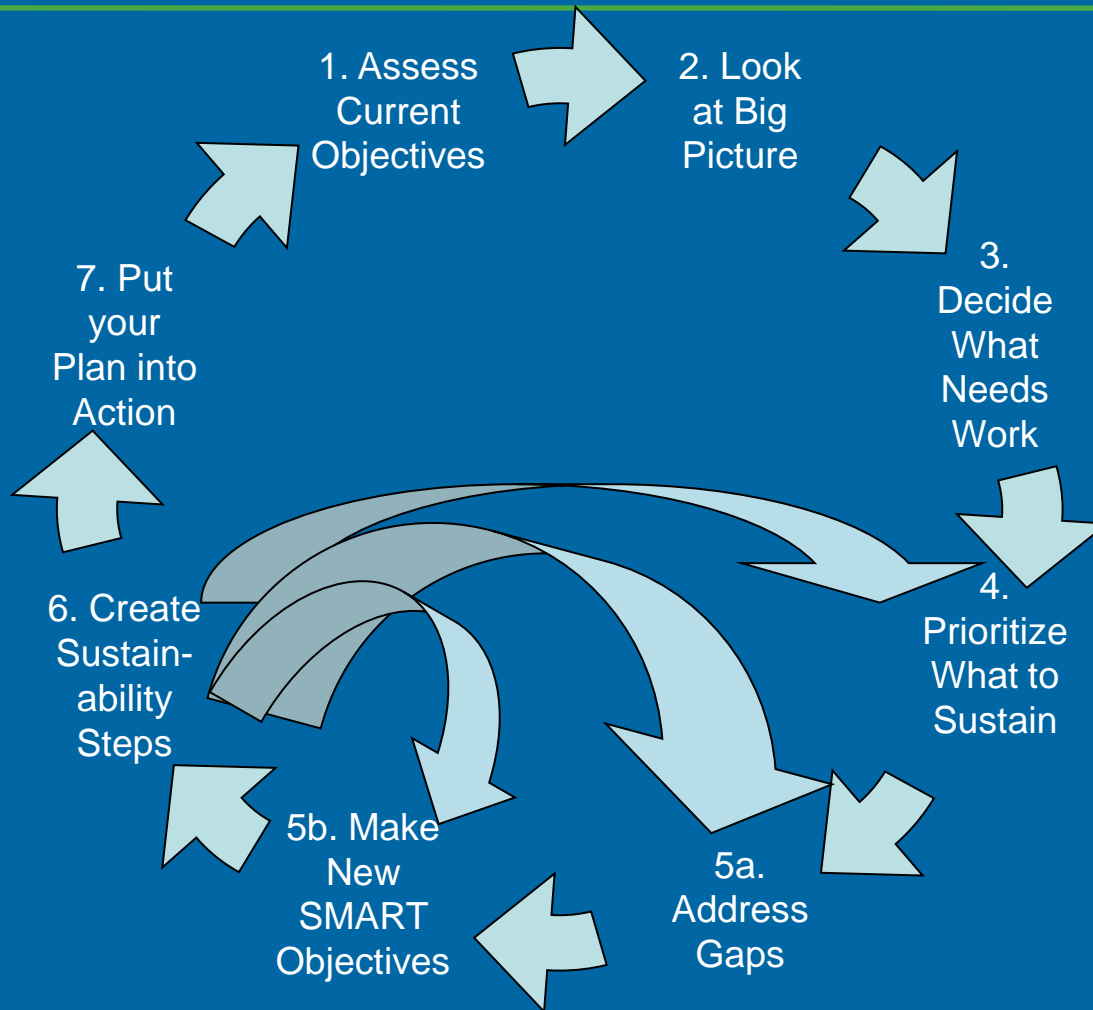
Sheila Krishnan
Campus Prevention
Specialist

Today's Session

- ✓ Homework worksheets
- ✓ Sustainability Strategy:
Sustaining Trainings
- ✓ Action Plans



Sustainability Planning Model



Sustainability Strategy of the Day: Sustaining Trainings

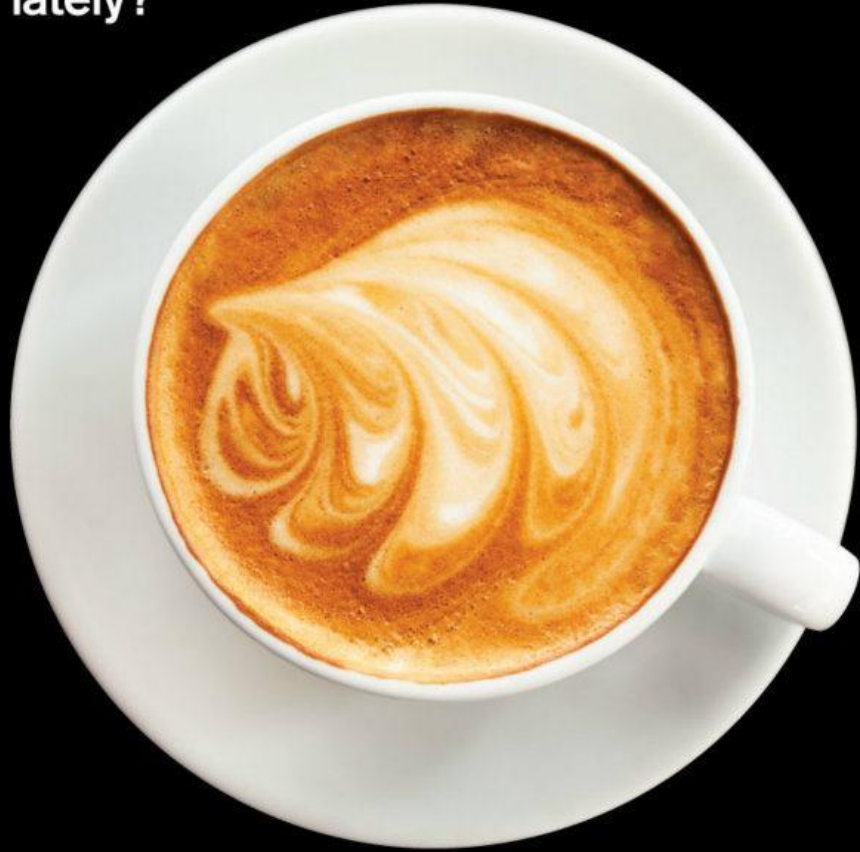
ASU Campus Care: Sustained Effort





- ✓ Working across departments and disciplines
- ✓ Primary prevention / promoting emotional well-being

Have you really
talked with someone
lately?



Share your thoughts and
feelings today with someone
that cares about you.

- ✓ **Awareness and Skill Building Training**
- ✓ **Social Marketing**
- ✓ **Peer Education**
- ✓ **Online Health Assessment**
- ✓ **Stress Management Presentation and Activities**
- **Think Differently, Feel Better Workshop**
- **Campus Care Coalition**

Stay Happy



ASU WELLNESS
asu.edu/wellness



TN CRISIS SERVICES AND SUICIDE PREVENTION

Presented by:
The Office of Crisis Services and
Suicide Prevention
Melissa Sparks, MSN, RN



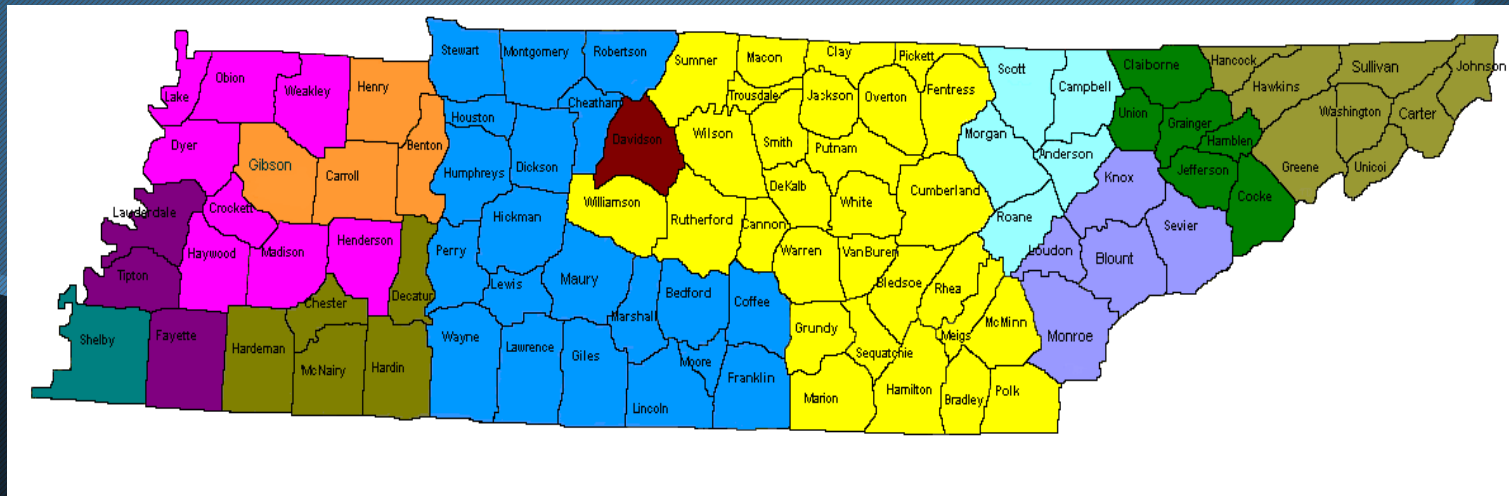
Current Sustainability Efforts



- The Tennessee Suicide Prevention Network – Funded by TDMHSAS is the statewide public-private organization responsible for implementing the Tennessee Strategy for Suicide Prevention as defined by the 2001 National Strategy for Suicide Prevention.
- Attempts to pass legislation requiring that certain professionals receive suicide prevention continuing education hours in order to be licensed to practice in TN.



- Embedding trainers within behavioral health organizations
- Development of suicide prevention curriculum specialized to the needs of the agency



Additional Strategies for Sustaining Gatekeeper Trainings

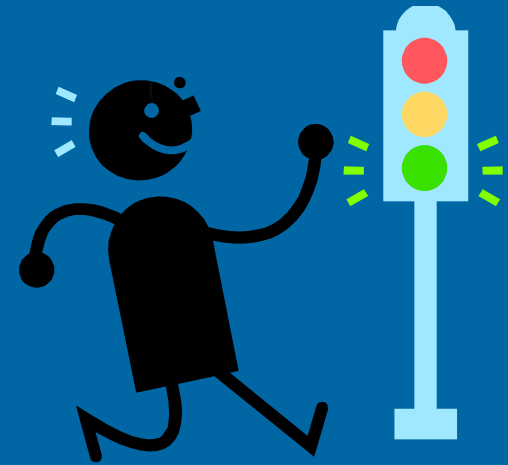
- ✓ Subsidizing trainings through sales of promotional items
- ✓ New trainers co-train with experienced trainers
- ✓ Penalty if trainers don't do X# trainings/year
- ✓ Master trainer/other re-certification resources



Strategies for Continuing Mental Health Provider Training

- ✓ Attendees pay full price/grant doesn't subsidize
- ✓ Prioritize high risk settings (e.g. JJ, foster care)
- ✓ MOUs with agencies within purview (e.g. Community MH Centers): include that everyone has to get trained
- ✓ Legislation or tribal mandate
- ✓ Train Counseling Center staff and community providers at the same time

How could you continue trainings after the grant?



Making Your Sustainability Action Plan

Objective: Increase knowledge about available resources on campus

Sub-objective: Maintain website

| Action Steps | Lead/ Responsibility | Team Members / Others | Timeline | Notes |
|--|-----------------------------|-----------------------------|----------------|---|
| Rewrite graduate intern job description to include maintaining website | Project Director | Counseling Center Director | April-May 2015 | Train graduate intern on safe messaging |
| | Project Director | Res. Life Coordinator | | |
| | Project Director | Intern | | |

Questions?

Wrap Up

- ✓ Thank you!
- ✓ Continue to work on worksheets, bringing partners together if haven't done so
- ✓ Share worksheets, *Action Plan* with PS, GPO, TAL
- ✓ Want more feedback? Talk to PS.
- ✓ Evaluation