

Implementing a Comprehensive Approach to Suicide Prevention

Bonnie Lipton, MPH

Prevention Specialist, Suicide Prevention
Resource Center

March 19, 2018

Garrett Lee Smith Suicide Prevention
Grantee Meeting



The Suicide Prevention Resource Center at EDC is supported by a grant from the U.S. Department of Health and Human Services (HHS), Substance Abuse and Mental Health Services Administration (SAMHSA), Center for Mental Health Services (CMHS), under Grant No. 5U79SM062297.

The views, opinions, and content expressed in this product do not necessarily reflect the views, opinions, or policies of CMHS, SAMHSA, or HHS.



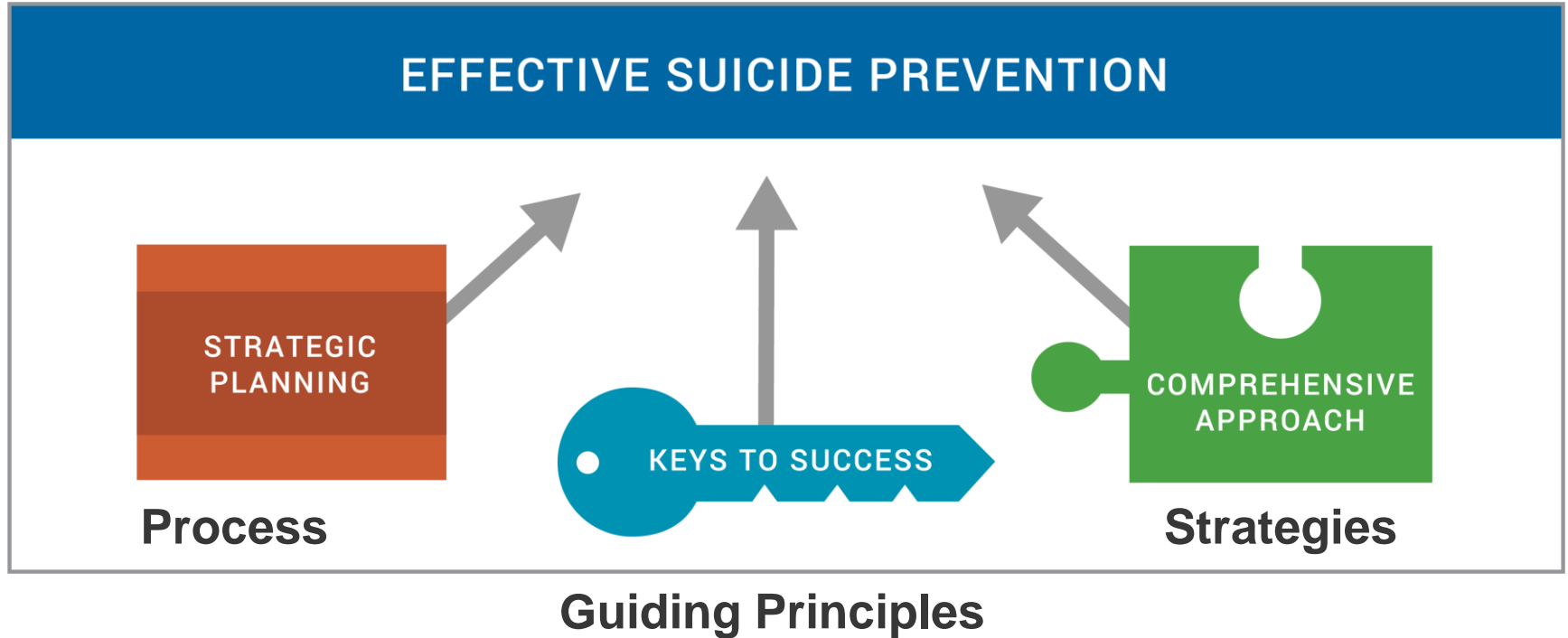
Agenda for Today

9:00-10:15 Implementing the Comprehensive Approach

10:15-10:30 Break

10:30-12:00 Campus Roundtable Discussion: Comprehensive Approach to Suicide Prevention

Effective Prevention



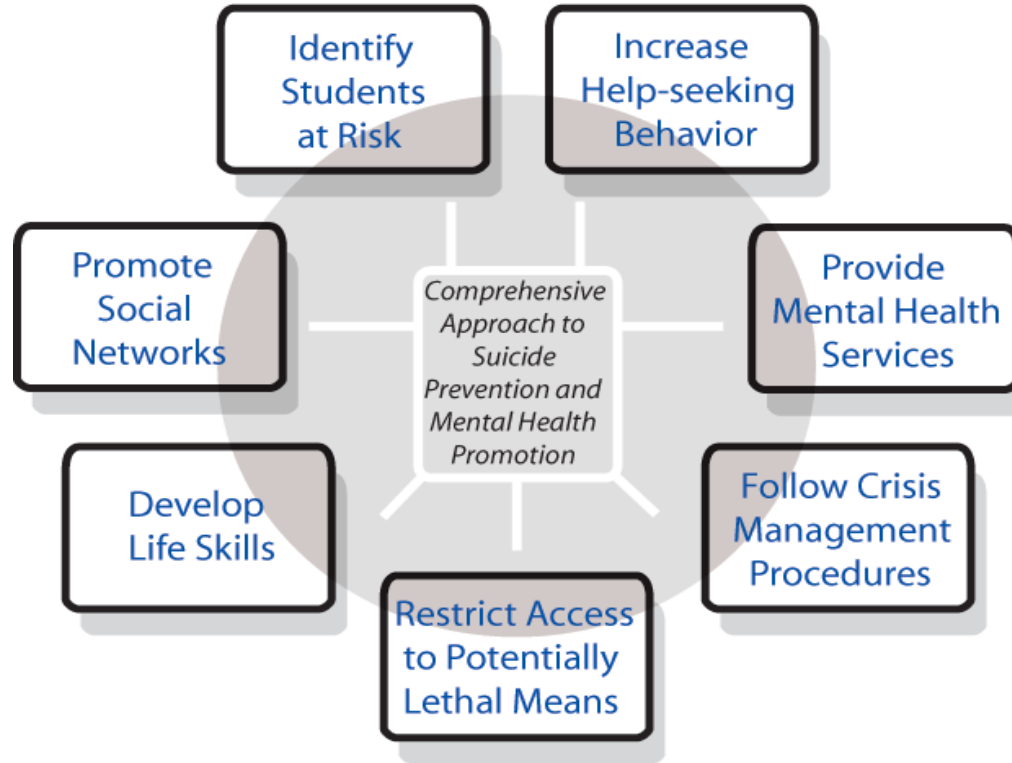
Effective Prevention: Strategic Planning



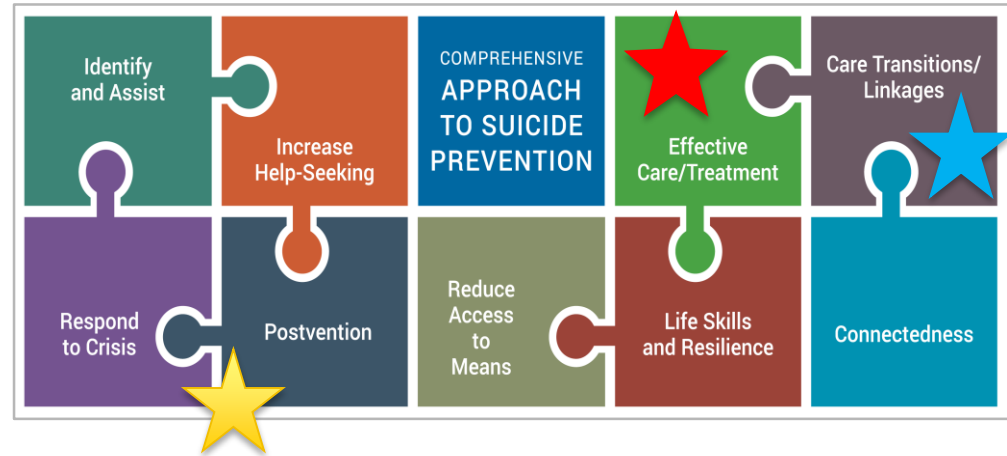
Effective Prevention: Keys to Success



The Jed Foundation/SPRC Comprehensive Approach



A Comprehensive Approach to Suicide Prevention



A Comprehensive Approach to Suicide Prevention



Components of the Comprehensive Approach

Component	Examples
Identify and Assist Persons at Risk	<ul style="list-style-type: none">• Hold gatekeeper trainings for staff, faculty, and students• Implement routine screenings on suicide risk at Health Services
Increase Help-Seeking	<ul style="list-style-type: none">• Conduct research on students' views about seeking help for mental health reasons• Make mental health services more accessible and culturally appropriate

Components of the Comprehensive Approach

Component	Examples
Ensure Access to Effective Care and Treatment	<ul style="list-style-type: none">• Train primary care & mental health providers on how to assess/manage suicidal patients• Develop relationships with community mental health providers/local hospitals for referrals
Support Safe Care Transitions and Create Organizational Linkages	<ul style="list-style-type: none">• Establish “warm handoff” procedures when referring students to other providers• Develop MOUs with local hospitals so you’re notified when students are admitted for mental health reasons

Components of the Comprehensive Approach

Component	Examples
Respond Effectively to Individuals in Crisis	<ul style="list-style-type: none">• Create a detailed crisis protocol plan for your campus; disseminate it to all faculty/staff• Incorporate triage system for counseling services to help students are in crisis
Provide for Immediate and Long-Term Postvention	<ul style="list-style-type: none">• Develop postvention protocols establishing clear guidelines for handling student deaths by suicide• Build relationships with news media to encourage safe reporting after a suicide death

Components of the Comprehensive Approach

Component	Examples
Enhance Life Skills and Resilience	<ul style="list-style-type: none">• Offer support groups for students experiencing stress (coming out group for LGBTQ students)• Identify common stressors affecting students (financial problems, relationship issues)
Promote Social Connectedness and Support	<ul style="list-style-type: none">• Create peer education/buddy programs for student groups (1st generation, international students)• Build a “bystander support” culture that encourages students to reach out to peers in need

Components of the Comprehensive Approach

Component	Examples
Reduce Access to Means of Suicide	<ul style="list-style-type: none">• Establish a prescription drug drop box on your campus for unused medications• Train health providers on lethal means counseling (online course “Counseling on Access to Lethal Means (CALM) https://training.sprc.org)

A Comprehensive Approach to Suicide Prevention



Comprehensive Approach to Suicide Prevention

Where would you put *Hold Gatekeeper Trainings* in the Comprehensive Approach Model?



Comprehensive Approach to Suicide Prevention

Where would you put *Establish MOUs with Local Providers/Hospitals* in the Comprehensive Approach Model?



Thank you!

Bonnie Lipton
blipton@edc.org

EDC Headquarters
43 Foundry Avenue
Waltham, MA 02453

EDC Washington DC
1025 Thomas Jefferson Street, NW
Suite 700
Washington, DC 20007

edc.org